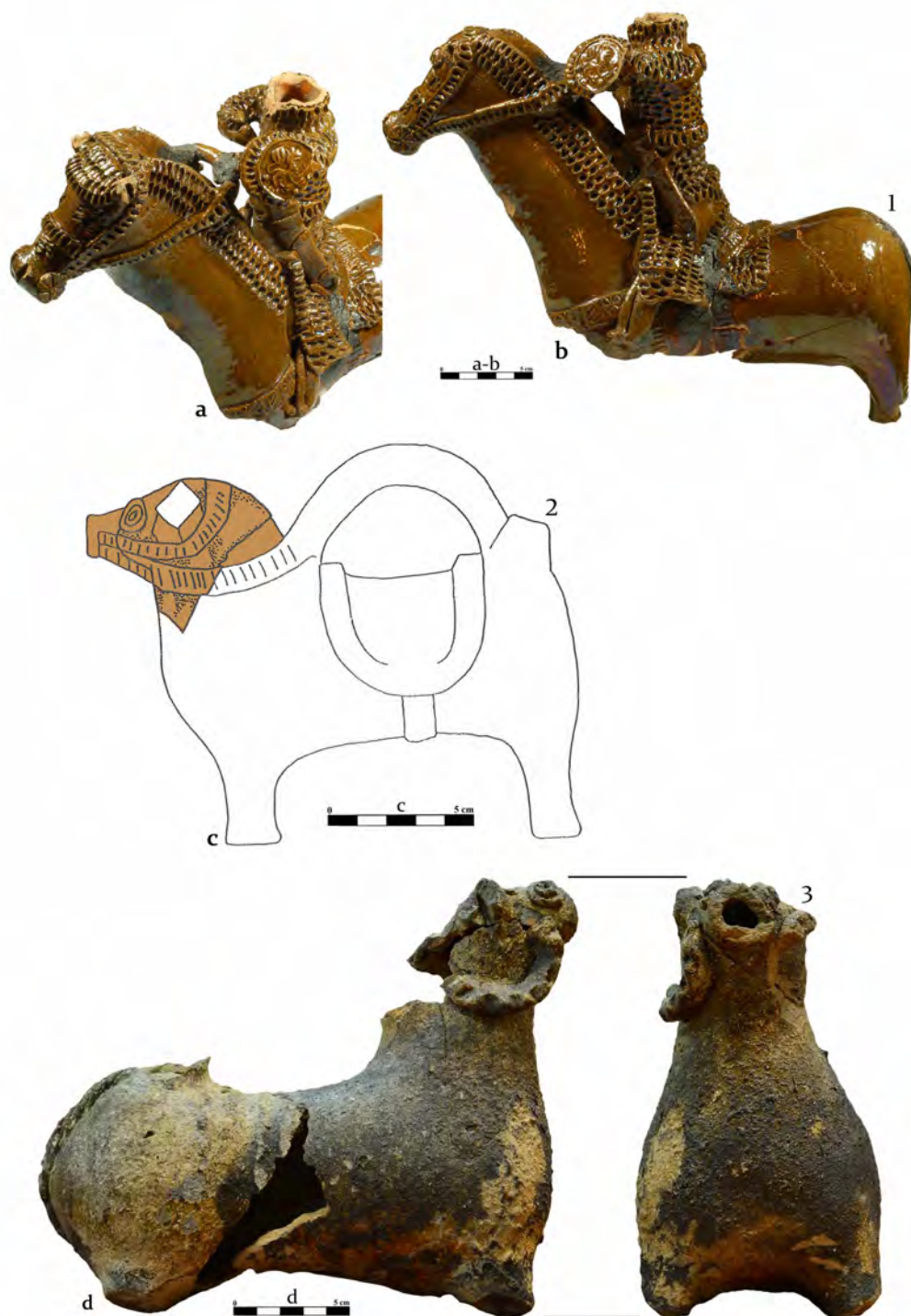
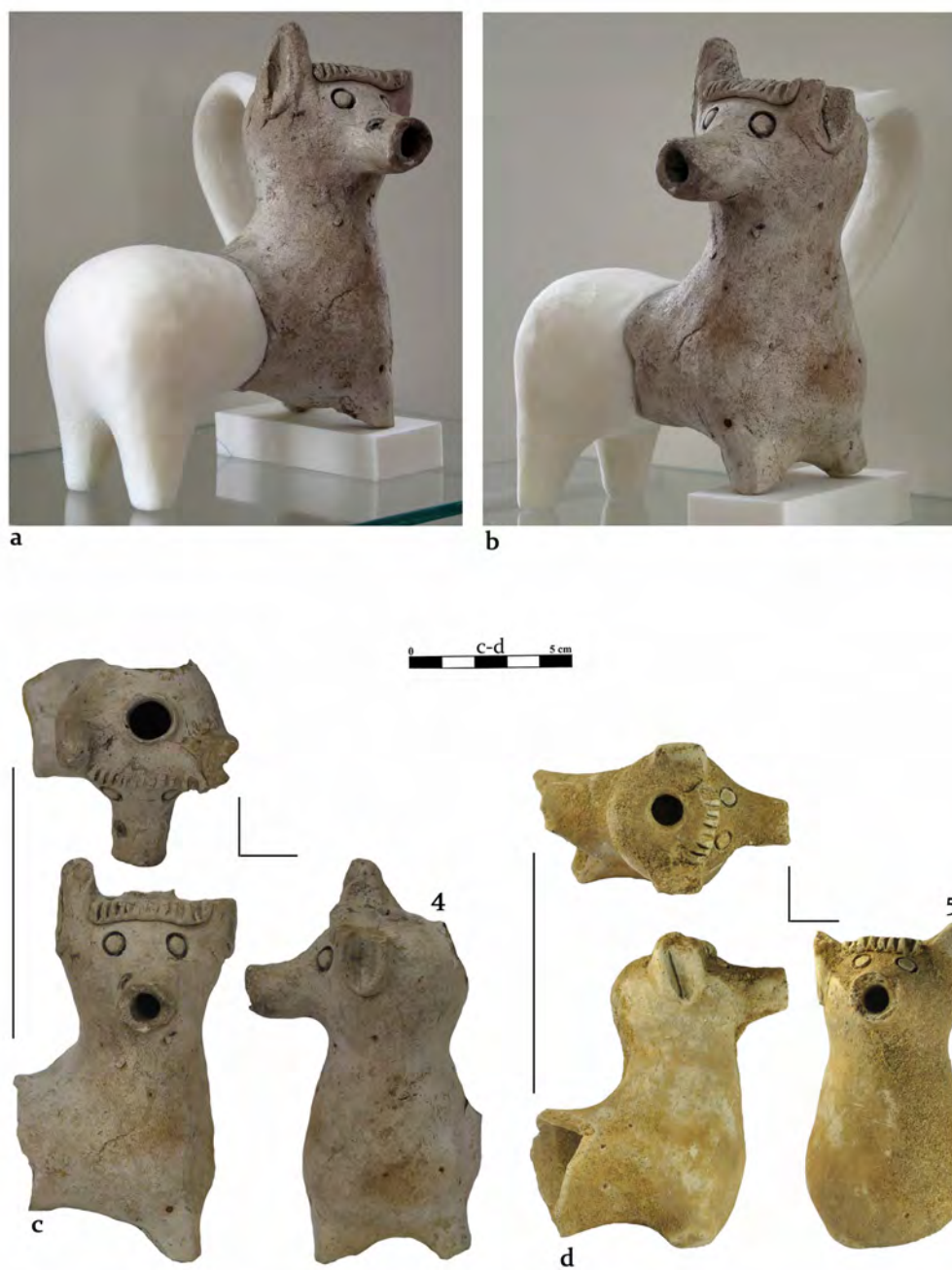


TABLICE



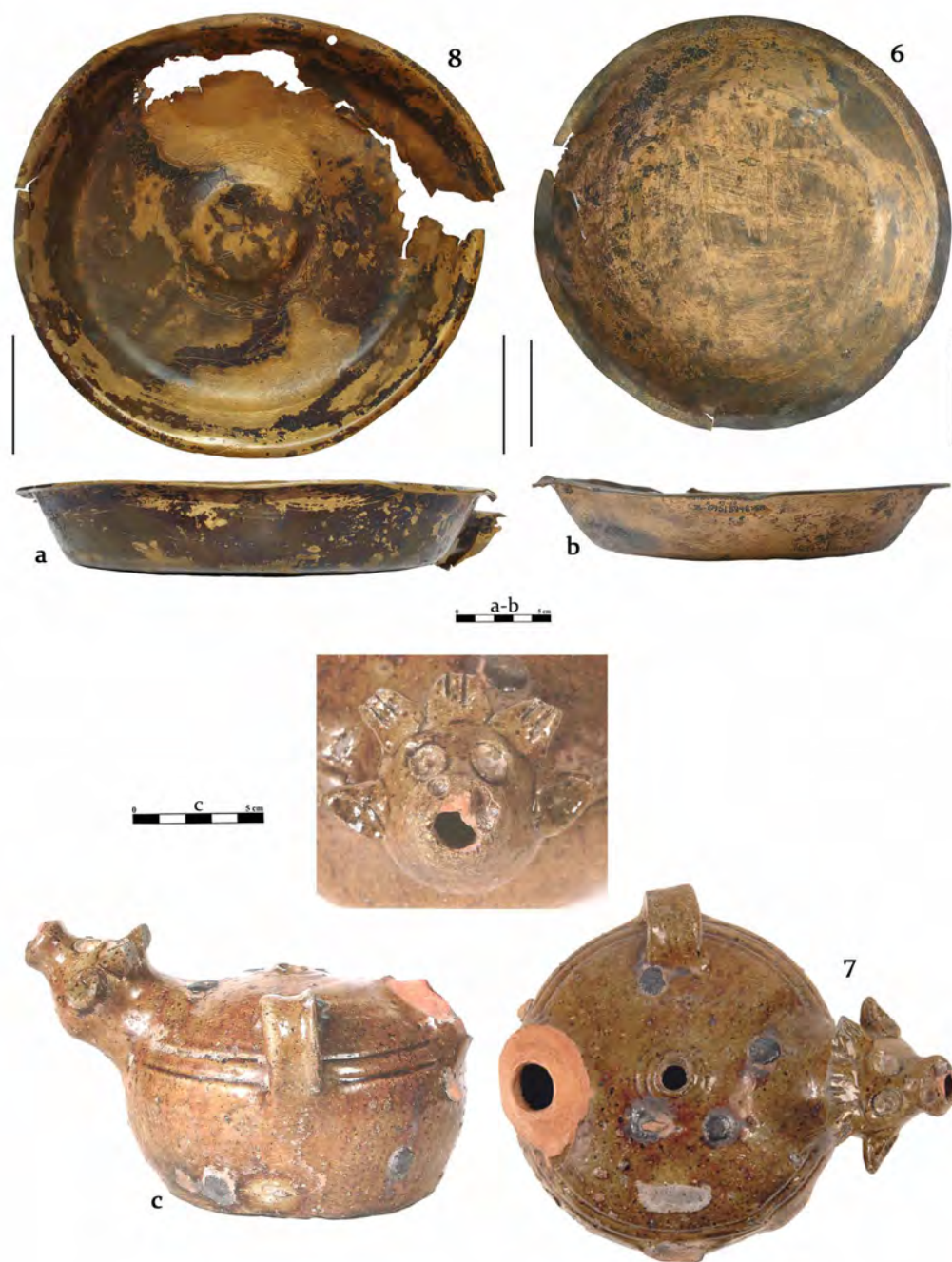
Tablica 1. Akwamanile ceramiczne, Wrocław: a-c – 2. poł. XIII w.; d – 2. poł. XIII – pocz. XIV w.

Plate 1. Pottery aquamaniles, Wrocław: a-c – 2nd half of the 13th c.; d – 2nd half of the 13th–early 14th c.



Tablica 2. Akwamanile ceramiczne: a-c – Nysa, 2. poł. XIV-XV w.; d – Wrocław, 2. poł. XIV – XV w.

Plate 2. Pottery aquamaniles: a-c – Nysa, 2nd half of the 14th–15th c.; d – Wrocław, 2nd half of the 14th–15th c.



Tablica 3. Akwamanila ceramiczna (c) i lavabo (misy) mosiężne (a), brązowe (b): a – Wrocław, XIII w.; b – Bytom, XIV – 1. poł. XV w.; c – Racibórz, kon. XIII – XIV w.

Plate 3. A pottery aquamanile (c) and a bronze/brass lavabo (bowl) (a-b): a – Wrocław, 13th c.; b – Bytom, 14th–1st half of the 15th c.; c – Racibórz, late 13th–14th c.



Tablica 4. Ceramiczne amfory (a-c) i flaszki (d-f): a – Bytom, kon. XIII – XIV w.; b – Głogów, XV w.; c – Opole, XV w.; d, f – Głogów, XV w.; e – Głogów, 2. poł. XIV – 1. poł. XV w.

Plate 4. Ceramic amphorae (a-c) and flasks (d-f): a – Bytom, late 13th–14th c.; b – Głogów, 15th c.; c – Opole, 15th c.; d, f – Głogów, 15th c.; e – Głogów, 2nd half of the 14th–1st half of the 15th c.



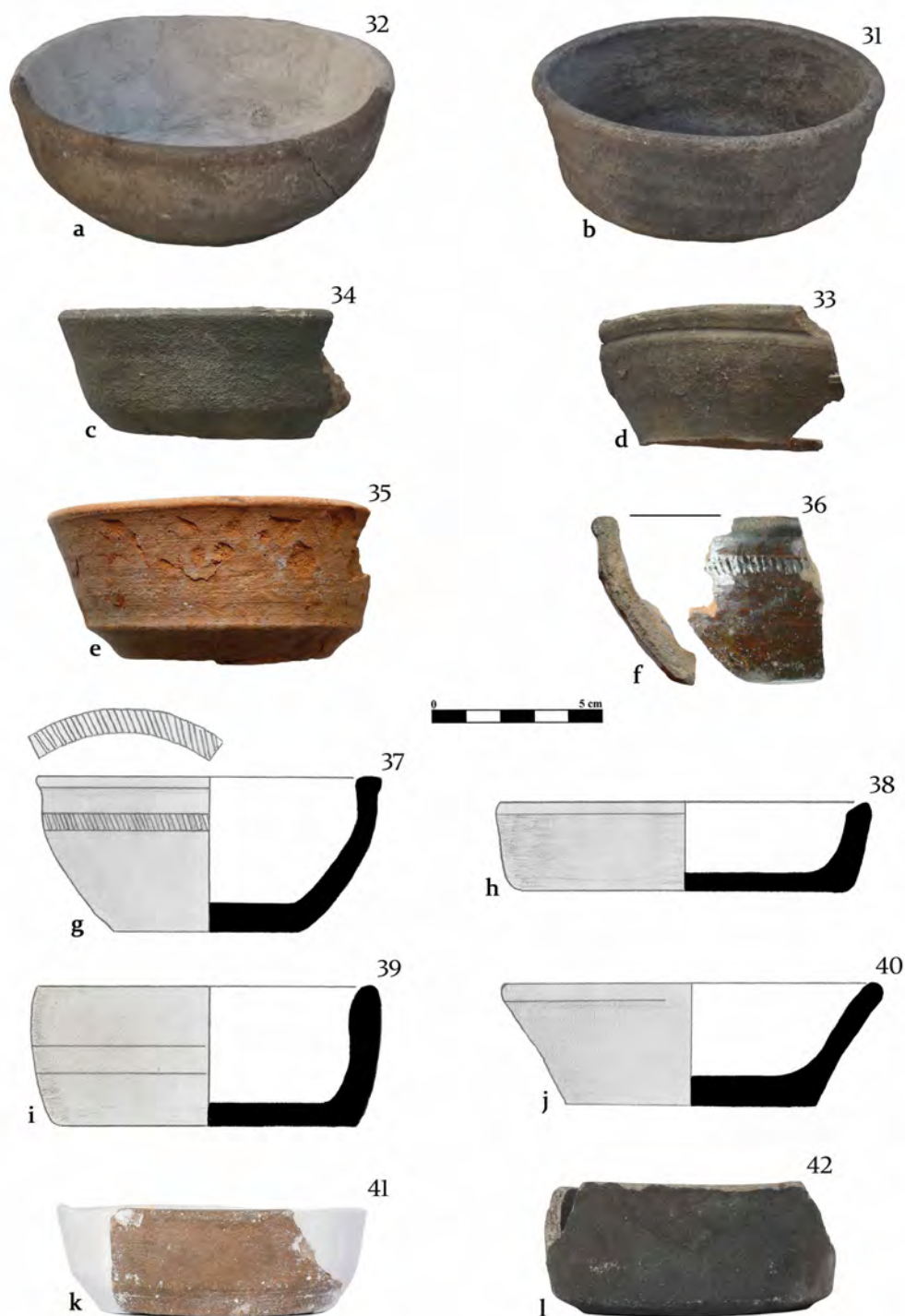
Tablica 5. Czarki ceramiczne: a – Bytom, XIV – pocz. XV w.; b – Brzeg, XV w.; c – Głogów, 1. poł. XVI w.; d – Głogów, XV w.; e – Głogów, 2. poł. XV – pocz. XVI w.; f, i – Głogów, XVI w.; g – Głogów, kon. XV – 1. poł. XVI w.; h – Głogów, 2. poł. XVI – 1. ćw. XVII w.

Plate 5. Ceramic cups: a – Bytom, 14th–early 15th c.; b – Brzeg, 15th c.; c – Głogów, 1st half of the 16th c.; d – Głogów, 15th c.; e – Głogów, 2nd half of the 15th–early 16th c.; f, i – Głogów, 16th c.; g – Głogów, late 15th–1st half of the 16th c.; h – Głogów, 2nd half of the 16th– 1st quarter of the 17th c.



Tablica 6. Czarki ceramiczne: a – Jawor, 2. poł. XV – pocz. XVI w.; b – Legnica, 2. poł. XV – 1. ćw. XVI w.; c-d – Legnica, 2. poł. XIV – 1. poł. XV w.; e – Legnica, XV – pocz. XVI w.; f – Nysa, XV w.; g – Nysa, 2. poł. XV w.; h – Otmuchów, kon. XIV – XV w.; i – Opole, XIV – XV w.

Plate 6. Ceramic cups: a – Jawor, 2nd half of the 15th–early 16th c.; b – Legnica, 2nd half of the 15th–1st quarter of the 16th c.; c-d – Legnica, 2nd half of the 14th–1st half of the 15th c.; e – Legnica, 15th–early 16th c.; f – Nysa, 15th c.; g – Nysa, 2nd half of the 15th c.; h – Otmuchów, late 14th–15th c.; i – Opole, 14th–15th c.



Tablica 7. Czarki ceramiczne: a – Otmuchów, XV w.; b – Otmuchów, kon. XIV – XV w.; c – Polkowice, XV w.; d – Polkowice, XIV w.; e – Polkowice, kon. XV – 1. poł. XVI w.; f-g – Wrocław, 1. poł. XIII w.; h-i – Wrocław, 4. ćw. XIII – 1. ćw. XIV w.; j – Wrocław, 1. poł. XIV w.; k – Wrocław, 2. poł. XIV – 1. poł. XV w.; l – Wrocław – XV w.

Plate 7. Ceramic cups: a – Otmuchów, 15th c.; b – Otmuchów, late 14th–15th c.; c – Polkowice, 15th c.; d – Polkowice, 14th c.; e – Polkowice, late 15th–1st half of the 16th c.; f-g – Wrocław, 1st half of the 13th c.; h-i – Wrocław, 4th quarter of the 13th–1st quarter of the 14th c.; j – Wrocław, 1st half of the 14th c.; k – Wrocław, 2nd half of the 14th– 1st half of the 15th c.; l – Wrocław – 15th c.



Tablica 8. Czarki ceramiczne (a-b), cynowa (d), drewniane (c, e), szklana (f): a – Głogów, 2. poł. XIV – 1. poł. XV w.; b – Wrocław, XV w.; c, e – Wrocław, 1. poł. XIII w.; d – Wrocław, XV – 1. poł. XVI w.; f – Wrocław, 2. poł. XV – 1. poł. XVI w.

Plate 8. Cups: ceramic (a-b), pewter (d), wooden (c, e), glass (f): a – Głogów, 2nd half of the 14th–1st half of the 15th c.; b – Wrocław, 15th c.; c, e – Wrocław, 1st half of the 13th c.; d – Wrocław, 15th–1st half of the 16th c.; f – Wrocław, 2nd half of the 15th–1st half of the 16th c.



Tablica 9. Dzbanki ceramiczne: a-c – Brzeg, 2. poł. XIII – pocz. XIV w.; d – Legnica, 2. poł. XIII – pocz. XIV w.; e – Głogów, 2. poł. XIII – pocz. XIV w.; f – Nysa, 2. poł. XIII – 1. ćw. XIV w.

Plate 9. Ceramic jugs: a-c – Brzeg, 2nd half of the 13th–early 14th c.; d – Legnica, 2nd half of the 13th–early 14th c.; e – Głogów, 2nd half of the 13th–early 14th c.; f – Nysa, 2nd half of the 13th–1st quarter of the 14th c.



Tablica 10. Dzbany/dzbanki ceramiczne: a – Bytom, 2. poł. XIV – 1. poł. XV w.; b – Brzeg – 2. poł. XIII – pocz. XIV w.; c – Głogów, 2. poł. XIII – 1. poł. XIV w.; d – Głogów, 2. ćw. XIII – pocz. XIV w.

Plate 10. Ceramic jugs: a – Bytom, 2nd half of the 14th–1st half of the 15th c.; b – Brzeg – 2nd half of the 13th–early 14th c.; c – Głogów, 2nd half of the 13th–1st half of the 14th c.; d – Głogów, 2nd quarter of the 13th–early 14th c.



Tablica 11. Dzbany ceramiczne, Bytom: 2. poł. XIII w.

Plate 11. Ceramic jugs, Bytom: 2nd half of the 13th c.



Tablica 12. Dzbany/dzbanki ceramiczne, Bytom: a-c - 2. poł. XIII w.; d - 2. poł. XIV w.

Plate 12. Ceramic jugs, Bytom: a-c - 2nd half of the 13th c.; d - 2nd half of the 14th c.



Tablica 13. Dzbany/dzbanki ceramiczne, Bytom: kon. XIII – 1. poł. XIV w.

Plate 13. Ceramic jugs, Bytom: late 13th–1st half of the 14th c.



Tablica 14. Dzbanki ceramiczne: a – Głogów, 2. poł. XIII – 1. poł. XIV w.; b-d – Głogów, 2. poł. XIII – pocz. XIV w.; e – Legnica, kon. XIII – 1. poł. XIV w.; f – Nysa, kon. XIV – 3. ćw. XV w.

Plate 14. Ceramic jugs: a – Głogów, 2nd half of the 13th–1st half of the 14th c.; b-d – Głogów, 2nd half of the 13th–early 14th c.; e – Legnica, late 13th–1st half of the 14th c.; f – Nysa, late 14th–3rd quarter of the 15th c.



Tablica 15. Dzbanki ceramiczne: a – Głogów, 2. poł. XIII – 1. poł. XIV w.; b – Głogów, 2. ćw. XIII – pocz. XIV w.; c-d – Głogów, 2. poł. XIII – pocz. XIV w.; e – Legnica, 2. ćw. XIII – pocz. XIV w.; f – Polkowice, 2. poł. XIII – 1. poł. XIV w.

Plate 15. Ceramic jugs: a – Głogów, 2nd half of the 13th–1st half of the 14th c.; b – Głogów, 2nd quarter of the 13th–early 14th c.; c-d – Głogów, 2nd half of the 13th–early 14th c.; e – Legnica, 2nd quarter of the 13th–early 14th c.; f – Polkowice, 2nd half of the 13th–1st half of the 14th c.



Tablica 16. Dzbany/dzbanki ceramiczne, Legnica: a – 2. poł. XIII – 1. poł. XIV w.; b – 2. poł. XIV – 1. ćw. XV w.; c-d – XV w.

Plate 16. Ceramic jugs, Legnica: a – 2nd half of the 13th–1st half of the 14th c.; b – 2nd half of the 14th–1st quarter of the 15th c.; c-d – 15th c.



Tablica 17. Dzbany/dzbanki ceramiczne, Wrocław: a-b – XIII – pocz. XIV w.; c – 1. poł. XIII w.

Plate 17. Ceramic jugs, Wrocław: a-b – 13th–early 14th c.; c – 1st half of the 13th c.



Tablica 18. Dzbanki ceramiczne, Świdnica: a-b, e-f – XIV w.; c-d – kon. XIII – XIV w.

Plate 18. Ceramic jugs, Świdnica: a-b, e-f – 14th c.; c-d – late 13th–14th c.



Tablica 19. Ceramiczne dzbany/dzbanki (a-c) i naczynie o formie niezidentyfikowanej (d): a – Bytom, XIV w.; b – Głogów, 2. poł. XV – pocz. XVI w.; c – Racibórz, XIV w.; d – Wrocław, 2. poł. XV – 1. poł. XVI w.

Plate 19. Ceramic jugs (a-c) and a vessel of an unidentified form (d): a – Bytom, 14th c.; b – Głogów, 2nd half of the 15th–early 16th c.; c – Racibórz, 14th c.; d – Wrocław, 2nd half of the 15th–1st half of the 16th c.



Tablica 20. Dzbanki ceramiczne: a – Brzeg, XV w.; b – Brzeg, 4. ćw. XV – 1. poł. XVI w.; c-d – Głogów, XV w.

Plate 20. Ceramic jugs: a – Brzeg, 15th c.; b – Brzeg, 4th quarter of the 15th–1st half of the 16th c.; c-d – Głogów, 15th c.



Tablica 21. Ceramiczne dzbanki (b, e-f) i kubki (a, c-d): a-c – Głogów, XV w.; d – Głogów, 2. poł. XV w.; e – Nysa, XV w.; f – Wrocław, 4. ćw. XIII – 1. ćw. XIV w.

Plate 21. Ceramic jugs (b, e-f) and mugs (a, c-d): a-c – Głogów, 15th c.; d – Głogów, 2nd half of the 15th c.; e – Nysa, 15th c.; f – Wrocław, 4th quarter of the 13th c.–1st quarter of the 14th c.



Tablica 22. Dzbanki ceramiczne: a – Racibórz, XV w.; b – Nysa, kon. XIV – 3. ćw. XV w.; c – Legnica, 2. poł. XV – pocz. XVI w.; d – Nysa, XV w.

Plate 22. Ceramic jugs: a – Racibórz, 15th c.; b – Nysa, late 14th–3rd quarter of the 15th c.; c – Legnica, 2nd half of the 15th–early 16th c.; d – Nysa, 15th c.



Tablica 23. Dzbanki ceramiczne: a-b – Głogów, XV w.; c – Nysa, XV w.; d – Wrocław (?), XV w.

Plate 23. Ceramic jugs: a-b – Głogów, 15th c.; c – Nysa, 15th c.; d – Wrocław (?), 15th c.



Tablica 24. Dzbany/dzbanki ceramiczne: a – Jawor, 2. poł. XV – pocz. XVI w.; b – Głogów, 1. poł. XVI w.; c – Głogów, 2. poł. XV w.; d – Nysa, 2. poł. XV – pocz. XVI w.; e – Głogów, kon. XV – 1. poł. XVI w.

Plate 24. Ceramic jugs: a – Jawor, 2nd half of the 15th–early 16th c.; b – Głogów, 1st half of the 16th c.; c – Głogów, 2nd half of the 15th c.; d – Nysa, 2nd half of the 15th–early 16th c.; e – Głogów, late 15th–1st half of the 16th c.



Tablica 25. Dzbany/dzbanki ceramiczne: a – Opole, 2. poł. XV w.; b – Opole, XV w.; c – Głogów, 2.–4. ćw. XVI w.; d – Brzeg, XVI w.; e – Głogów, 2. poł. XVI w.; f – Jawor, 1. poł. XVI w.

Plate 25. Ceramic jugs: a – Opole, 2nd half of the 15th c.; b – Opole, 15th c.; c – Głogów, 2nd–4th quarter of the 16th c.; d – Brzeg, 16th c.; e – Głogów, 2nd half of the 16th c.; f – Jawor, 1st half of the 16th c.



Tablica 26. Dzbanek ceramiczny, Głogów: XIV w. (wys. 12,7 cm)

Plate 26. A ceramic jug, Głogów: 14th c. (12,7 cm tall)



Tablica 27. Ceramiczne dzbanki/kubki (a-f, i) i naczynia o formie nieokreślonej (g-h): a – Głogów, 2. poł. XIV – 1. poł. XV w.; b – Głogów, kon. XIV – XV w.; c-d, g – Wrocław, 1. poł. XIV w.; e – Wrocław, XIV w.; f, i – Wrocław, 4. ćw. XIII – 1 ćw. XIV w.; h – Wrocław, kon. XIII – 1. poł. XIV w.

Plate 27. Ceramic jugs/mugs (a-f, i) and vessels of an unidentified form (g-h): a – Głogów, 2nd half of the 14th–1st half of the 15th c.; b – Głogów, late 14th–15th c.; c-d, g – Wrocław, 1st half of the 14th c.; e – Wrocław, 14th c.; f, i – Wrocław, 4th quarter of the 13th–1st quarter of the 14th c.; h – Wrocław, late 13th–1st half of the 14th c.



Tablica 28. Dzbanek ceramiczny, Wrocław: XV w.

Plate 28. A ceramic jug, Wrocław: 15th c.



Tablica 29. Dzbanek ceramiczny, Wrocław: XV w.

Plate 29. A ceramic jug, Wrocław: 15th c.



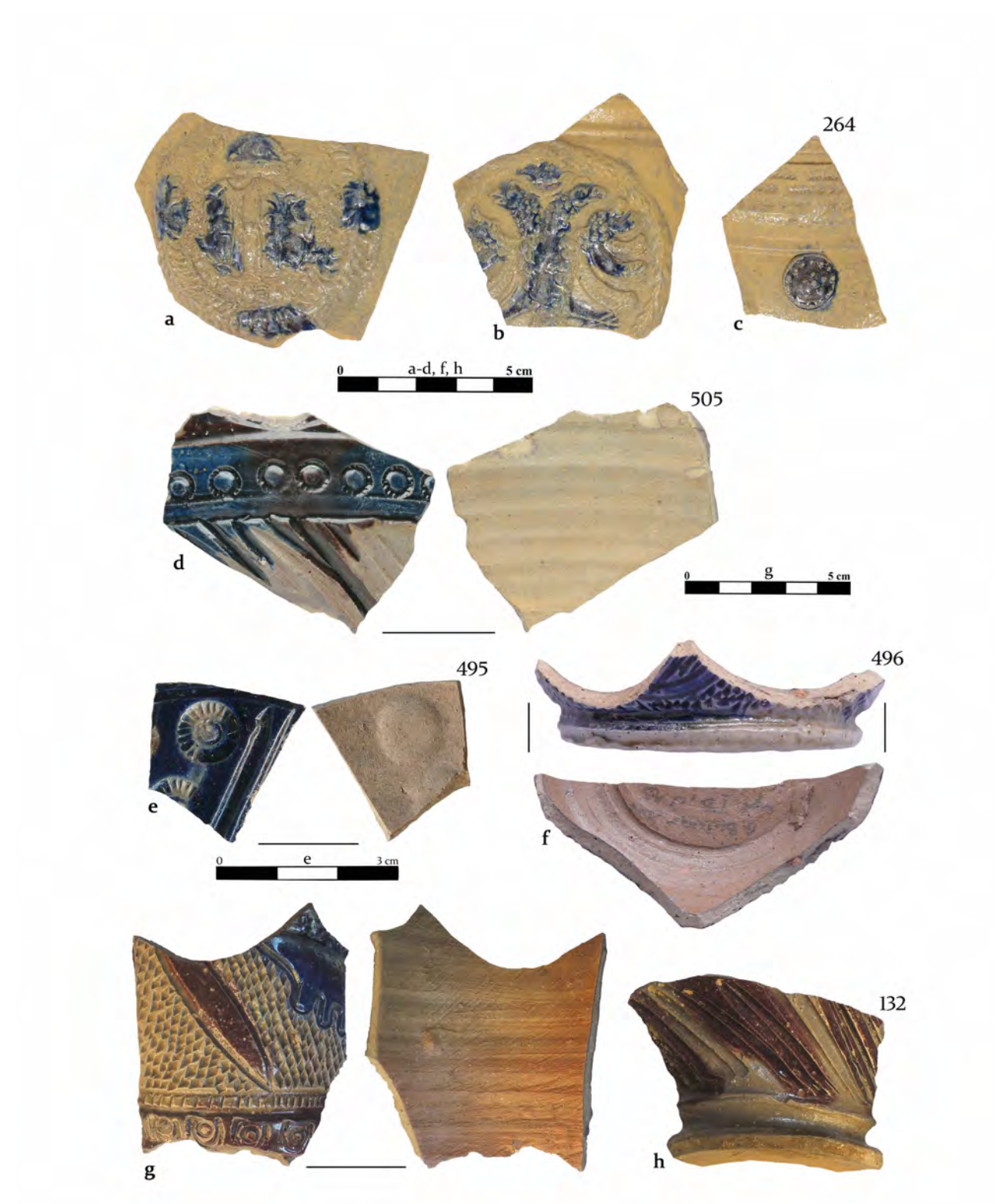
Tablica 30. Dzbanki ceramiczne (detale zdobnicze), Wrocław: XV w.

Plate 30. Ceramic jugs (decoration details), Wrocław: 15th c.



Tablica 31. Dzban ceramiczny (a) i detal zdobniczy (b), Świdnica: XV w.

Plate 31. A ceramic jug (a) and a decoration detail (b), Świdnica: 15th c.



Tablica 32. Ceramiczne dzbanki (g-h), kubek (a-c) i naczynia o formie nieokreślonej (d-f): a-c – Głogów, 4. ćw. XVI – 1. ćw. XVII w.; d – Wrocław, 2. poł. XVII – pocz. XVIII w.; e-f – Głogów, 2. poł. XVII – pocz. XVIII w.; g-h – Nysa, 2. poł. XVII – pocz. XVIII w.

Plate 32. Ceramic jugs (g-h), a mug (a-c) and vessels of an unidentified form (d-f): a-c – Głogów, 4th quarter of the 16th–1st quarter of the 17th c.; d – Wrocław, 2nd half of the 17th–early 18th c.; e-f – Głogów, 2nd half of the 17th–early 18th c.; g-h – Nysa, 2nd half of the 17th–early 18th c.



Tablica 33. Ceramiczne dzbany/dzbanki (b-d) i kubek (a): a – Nysa, 4. ćw. XVI – 1. poł. XVII w.; b, d – Nysa, 2. poł. XVI – 1. ćw. XVII w.; c – Oleśnica, 2. poł. XVII – pocz. XVIII w.

Plate 33. Ceramic jugs (b-d) and a mug (a): a – Nysa, 4th quarter of the 16th–1st half of the 17th c.; b, d – Nysa, 2nd half of the 16th–1st quarter of the 17th c.; c – Oleśnica, 2nd half of the 17th–early 18th c.



Tablica 34. Dzbane ceramiczny, Brzeg: 2. poł. XVI w.

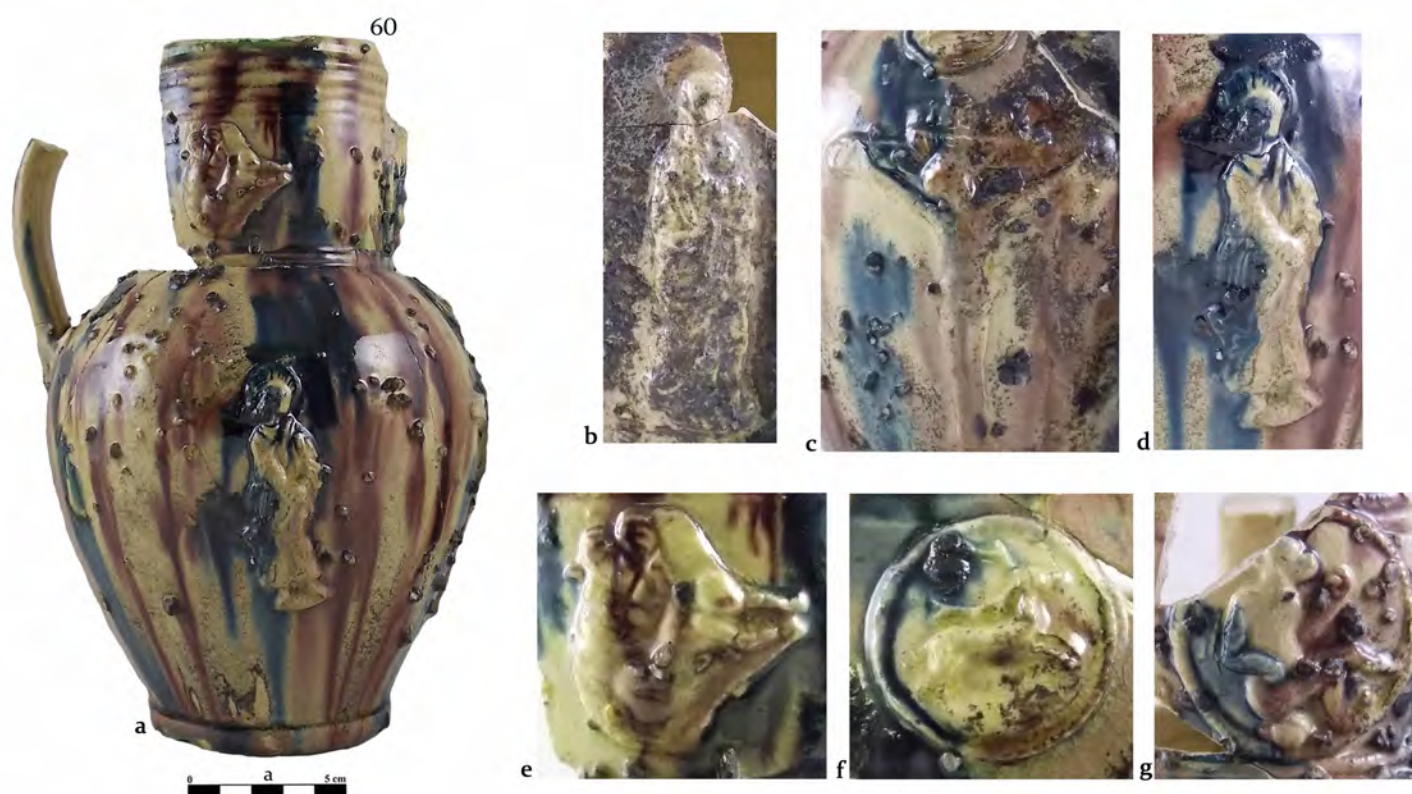
Plate 34. A ceramic jug, Brzeg: 2nd half of the 16th c.



59

Tablica 35. Dzbane ceramiczny, detale zdobnicze, Brzeg: 2. poł. XVI w.

Plate 35. A ceramic jug, decoration details, Brzeg: 2nd half of the 16th c.



Tablica 36. Dzbane ceramiczny (a), detale zdobnicze (b-g), Brzeg: 2. poł. XVI w.

Plate 36. A ceramic jug (a), decoration details (b-g), Brzeg: 2nd half of the 16th c.



Tablica 37. Fragmenty naczyń ceramicznych o formie nieokreślonej (detale zdobnicze), Brzeg: 2. poł. XVI w.

Plate 37. Fragments of ceramic vessels of an unidentified form (decoration details), Brzeg: 2nd half of the 16th c.



Tablica 38. Fragmenty naczyń ceramicznych o formie nieokreślonej (detale zdobnicze), Brzeg: 2. poł. XVI w.

Plate 38. Fragments of ceramic vessels of an unidentified form (decoration details), Brzeg: 2nd half of the 16th c.



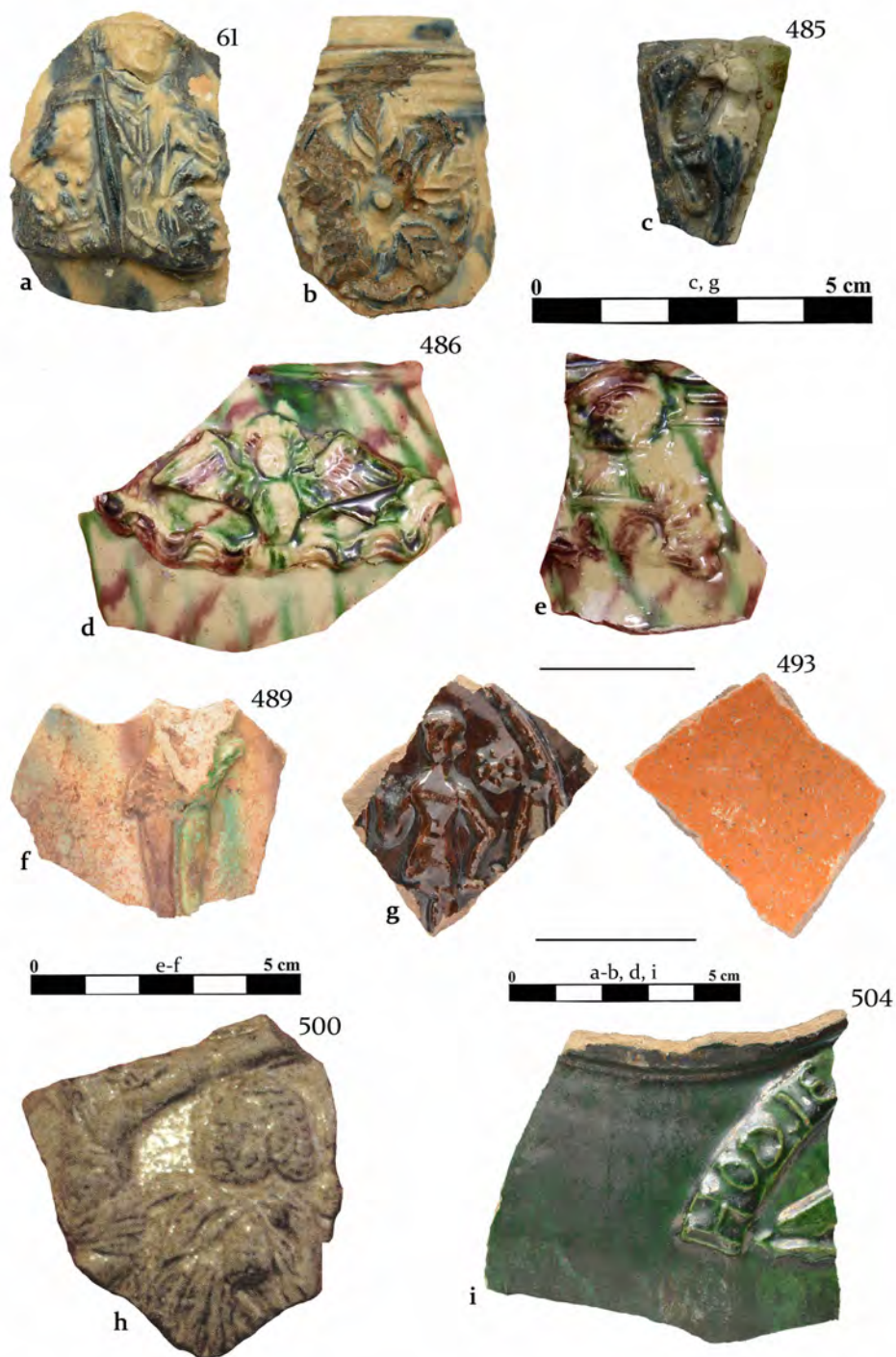
Tablica 39. Fragmenty naczyń ceramicznych o formie nieokreślonej (detale zdobnicze), Brzeg: 2. poł. XVI w.

Plate 39. Fragments of ceramic vessels of an unidentified form (decoration details), Brzeg: 2nd half of the 16th c.



Tablica 40. Fragmenty naczyń ceramicznych o formie nieokreślonej (detale zdobnicze), Głogów: 2. poł. XVI – pocz. XVII w.

Plate 40. Fragments of ceramic vessels of an unidentified form (decoration details), Głogów: 2nd half of the 16th–early 17th c.



Tablica 41. Fragmenty ceramicznych dzbanków/garnków (detale zdobnicze): a-e - Brzeg, 2. poł. XVI - pocz. XVII w.; f - Głogów, 2. poł. XVI w.; g - Głogów, 4. ćw. XVI - 1. poł. XVII w.; h - Sulechów, 2. poł. XVI - 1. ćw. XVII w.; i - Wrocław, 4. ćw. XVI - 1. ćw. XVII w.

Plate 41. Fragments of ceramic jugs/pots (decoration details): a-e - Brzeg, 2nd half of the 16th-early 17th c.; f - Głogów, 2nd half of the 16th c.; g - Głogów, 4th quarter of the 16th-1st half of the 17th c.; h - Sulechów, 2nd half of the 16th-1st quarter of the 17th c.; i - Wrocław, 4th quarter of the 16th-1st quarter of the 17th c.



Tablica 42. Dzbanki ceramiczne: a – Bolesławiec, kon. XVI – 1. ćw. XVII w.; b – Bolesławiec, kon. XVI – 1. poł. XVII w.; c – Wrocław, XVII w.

Plate 42. Ceramic jugs: a – Bolesławiec, late 16th–1st quarter of the 17th c.; b – Bolesławiec, late 16th–1st half of the 17th c.; c – Wrocław, 17th c.



Tablica 43. Fragmenty dzbanków ceramicznych (detale zdobnicze) (a-f), rekonstrukcja (g): a-c – Wrocław, 2. poł. XVI – pocz. XVII w.; d-g – Głogów, 2. poł. XVI w.

Plate 43. Fragments of ceramic jugs (decoration details) (a-f), a reconstruction (g): a-c – Wrocław, 2nd half of the 16th–early 17th c.; d-g – Głogów, 2nd half of the 16th c.



Tablica 44. Dzbanek ceramiczny, Opole: 2. poł. XVI – pocz. XVII w.

Plate 44. A ceramic jug, Opole: 2nd half of the 16th–early 17th c.



Tablica 45. Dzbanek ceramiczny, Świdnica: 2. poł. XVI – pocz. XVII w.

Plate 45. A ceramic jug, Świdnica: 2nd half of the 16th–early 17th c.



Tablica 46. Dzban ceramiczny, Śląsk: 2. poł. XVI – pocz. XVII w.

Plate 46. A ceramic jug, Silesia: 2nd half of the 16th–early 17th c.



Tablica 47. Dzbanek ceramiczny (c) i detale zdobnicze (a-b), Kozuchów: XVI w.

Plate 47. A ceramic jug (c) and decoration details (a-b), Kozuchów: 16th c.



Tablica 48. Dzbanki ceramiczne: a-b – Brzeg, 4. ćw. XVI – 1. ćw. XVII w.; c-d – Głogów, 2. poł. XVI w.

Plate 48. Ceramic jugs: a-b – Brzeg, 4th quarter of the 16th–1st quarter of the 17th c.; c-d – Głogów, 2nd half of the 16th c.



Tablica 49. Ceramiczne dzbany (a, c-d) i kufel (b): a – Śląsk, 2. poł. XVI w.; b-c – Śląsk, 2. poł. XVI – pocz. XVII w.; d – Brzeg (?), 2. poł. XVI w.

Plate 49. Ceramic jugs (a, c-d) and a tankard (b): a – Silesia, 2nd half of the 16th c.; b-c – Silesia, 2nd half of the 16th c.–early 17th c.; d – Brzeg (?), 2nd half of the 16th c.



Tablica 50. Dzbanek ceramiczny, Brzeg: 2. poł. XVI w.

Plate 50. A ceramic jug, Brzeg: 2nd half of the 16th c.



Tablica 51. Dzbaneł ceramiczny, Głogów: 4. ćw. XVI – 1. ćw. XVII w. (wys. 20,5 cm)

Plate 51. A ceramic jug, Głogów: 4th quarter of the 16th–1st quarter of the 17th c. (20,5 cm tall)



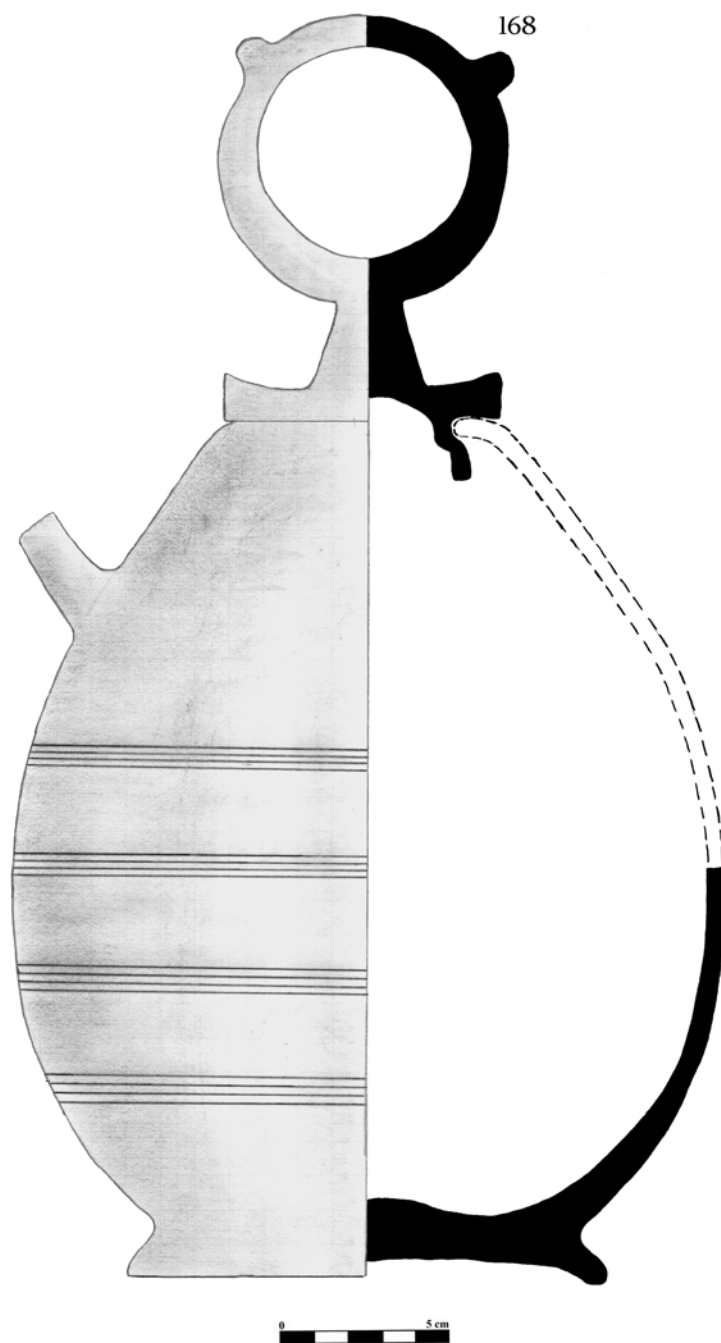
Tablica 52. Ceramiczne dzbanki (b, d-f), pokrywka (c) i naczynie o formie nieokreślonej (a): a-c – Głogów, 4. ćw. XVI – 1. poł. XVII w.; d – Nysa, 2. poł. XVI – 1. ćw. XVII w.; e – Wrocław, 2. poł. XVI w.; f – Śląsk, 4. ćw. XVI – 1. ćw. XVII w.

Plate 52. Ceramic jugs (b, d-f), a lid (c) and a vessel of an unidentified form (a): a-c – Głogów, 4th quarter of the 16th–1st half of the 17th c.; d – Nysa, 2nd half of the 16th–1st quarter of the 17th c.; e – Wrocław, 2nd half of the 16th c.; f – Silesia, 4th quarter of the 16th–1st quarter of the 17th c.



Tablica 53. Fragmenty dzbanów/dzbanków drewnianych: a – Nysa, 2 poł. XIII – XIV w.; b-d – Wrocław, 1. poł. XIII w.

Plate 53. Fragments of wooden jugs: a – Nysa, 2nd half of the 13th–14th c.; b-d – Wrocław, 1st half of the 13th c.



Tablica 54. Rekonstrukcja dzbana drewnianego, Wrocław: 1. poł. XIII w.

Plate 54. Reconstruction of a wooden jug, Wrocław: 1st half of the 13th c.



Tablica 55. Dzbaneek cynowy (a) i medalion (b), Legnica: XV w.

Plate 55. A pewter jug (a) and a medallion (b), Legnica: 15th c.



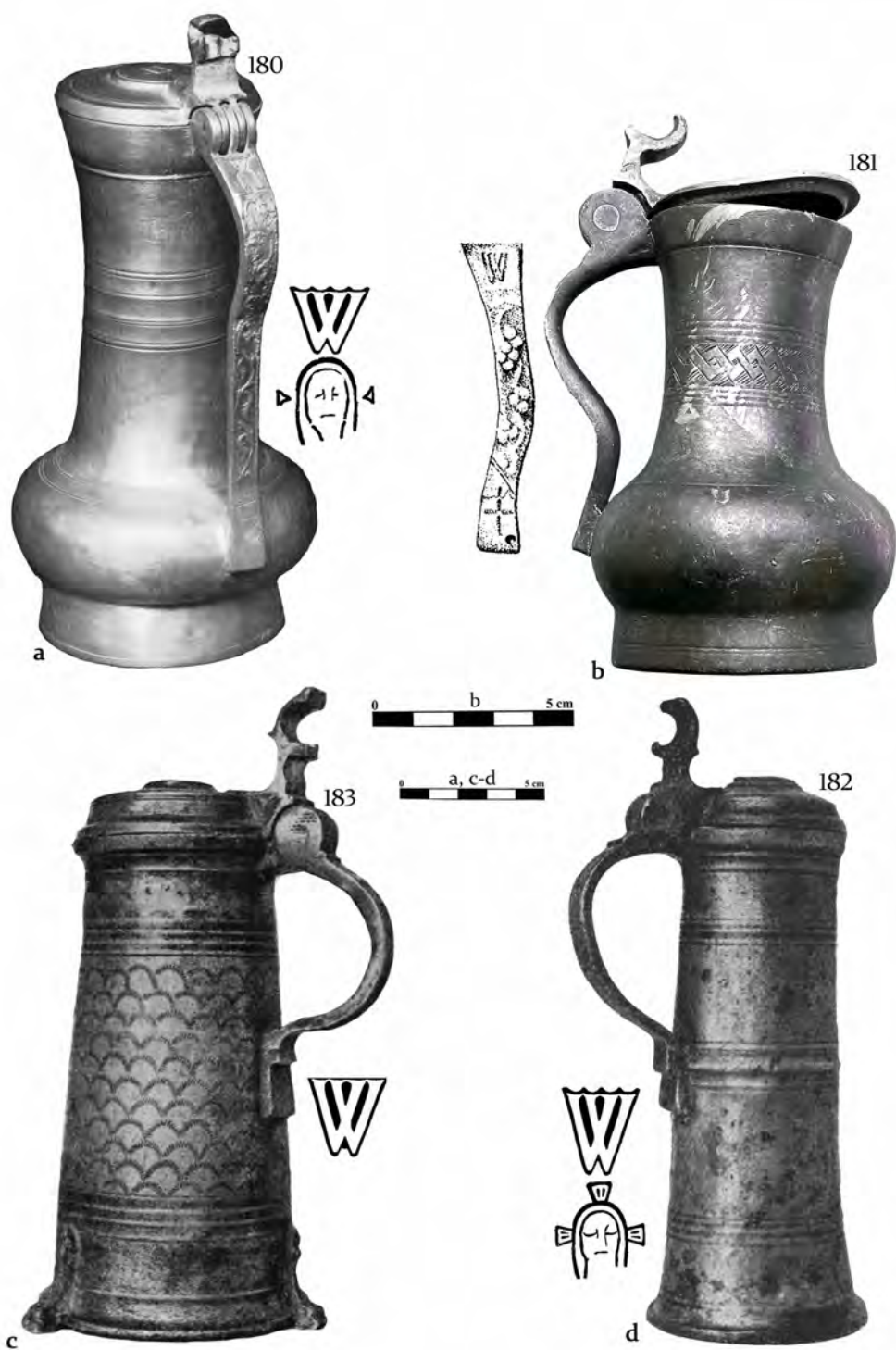
Tablica 56. Dzbanki cynowe: Legnica, 2. poł. XV w.

Plate 56. Pewter jugs: Legnica, 2nd half of the 15th c.



Tablica 57. Dzbany/dzbanki cynowe: a – Żagań (?), 2. poł. XV – pocz. XVI w.; b-c – Nysa, kon. XV – 1. ćw. XVI w.; d – Wrocław, 2. poł. XVI w.

Plate 57. Petwer jugs: a – Żagań (?), 2nd half of the 15th–early 16th c.; b-c – Nysa, late 15th–1st quarter of the 16th c.; d – Wrocław, 2nd half of the 16th c.



Tablica 58. Dzbanki cynowe, Wrocław: a – 2. poł. XV w.; b – 4. ćw. XV – 1. ćw. XVI w.; c – 1. poł. XVI w.; d – kon. XV – 1. ćw. XVI w.

Plate 58. Pewter jugs, Wrocław: a – 2nd half of the 15th c.; b – 4th quarter of the 15th–1st quarter of the 16th c.; c – 1st half of the 16th c.; d – late 15th–1st quarter of the 16th c.



Tablica 59. Cynowe konwie (b-c), medalion (a) i detal zdobniczy (d): a-b – Jelenia Góra, 1506 r.; b – d Wrocław, 1511 r.

Plate 59. Pewter tankards (b-c), a medallion (a) and a decoration detail (d): a-b – Jelenia Góra, 1506; b – d Wrocław, 1511.



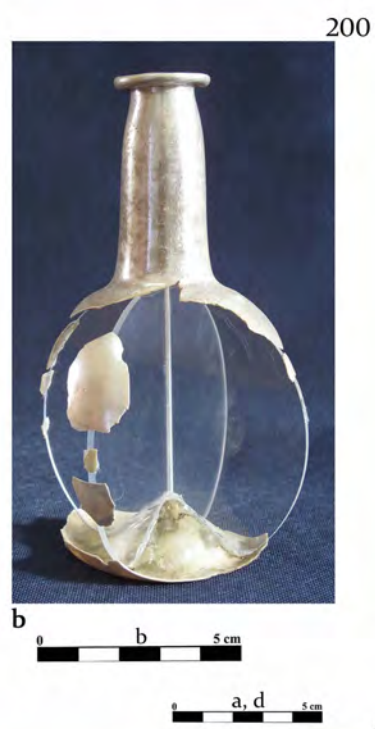
Tablica 60. Cynowe konwie (b-c), detal zdobniczy (a) i medalion (d): a-b – Dzierżoniów, 1589 r.; c-d – Paczków, 1586 r.

Plate 60. Pewter tankards (b-c), a decoration detail (a) and a medallion (d): a-b – Dzierżoniów, 1589; c-d – Paczków, 1586.



Tablica 61. Dzbanki szklane: a-b – Głogów, 1.-3. ćw. XVII w.; c – Nysa, XV w.; d – Nysa, 1. poł. XVII w.

Plate 61. Glass jugs: a-b – Głogów, 1st-3rd quarter of the 17th c.; c – Nysa, 15th c.; d – Nysa, 1st half of the 17th c.



Tablica 62. Flasze szklane, Nysa: a – kon. XVI – 1. poł. XVII w.; b, d – 2. poł. XIV – XV w.; c – 2 ćw. XVI – pocz. XVII w.

Plate 62. Glass flasks, Nysa: a – late 16th–1st half of the 17th; b, d – 2nd half of the 14th–15th c.; c – 2nd quarter of the 16th–early 17th c.



Tablica 63. Flasze szklane, Głogów: a-f – 4. ćw. XVI – 1. ćw. XVII w.

Plate 63. Glass flasks, Głogów: a-f – 4th quarter of the 16th–1st quarter of the 17th c.



Tablica 64. Flaszka szklana, Wrocław: kon. XVI – 1. poł. XVII w.

Plate 64. A glass flask, Wrocław: late 16th–1st half of the 17th c.



Tablica 65. Ceramiczne garnki (a-e, g) i detale zdobnicze (f), Nysa: 4. ćw. XVI – 1. poł. XVII w.

Plate 65. Ceramic pots (a-e, g) and decoration details (f), Nysa: 4th quarter of the 16th–1st half of the 17th c.



Tablica 66. Ceramiczne garnki (c-d, f-g) i naczynia o formie nieokreślonej (a-b, e), Nysa: 4. ćw. XVI – 1. poł. XVII w.

Plate 66. Ceramic pots (c-d, f-g) and vessels of an unidentified form (a-b, e), Nysa: 4th quarter of the 16th–1st half of the 17th c.



Tablica 67. Garnki ceramiczne, Głogów: 1. poł. XVII w.

Plate 67. Ceramic pots, Głogów: 1st half of the 17th c.



Tablica 68. Kielichy szklane, Głogów: a, c-e - 4. ćw. XVI - 1. poł. XVII w.; b, f-g - 4. ćw. XVI - 1. ćw. XVII w.

Plate 68. Glass goblets, Głogów: a, c-e - 4th quarter of the 16th-1st half of the 17th c.; b, f-g - 4th quarter of the 16th-1st quarter of the 17th c.



Tablica 69. Kielichy szklane: a, f – Głogów, 4. ćw. XVI – 1. poł. XVII w.; b-c – Głogów, 4. ćw. XVI – 1. ćw. XVII w.; d – Wrocław, 4. ćw. XVI – 1. poł. XVII w.; e – Głogów, kon. XVI – 1. poł. XVII w.

Plate 69. Glass goblets: a, f – Głogów, 4th quarter of the 16th–1st half of the 17th c.; b-c – Głogów, 4th quarter of the 16th–1st quarter of the 17th c.; d – Wrocław, 4th quarter of the 16th–1st half of the 17th c.; e – Głogów, late 16th–1st half of the 17th c.



Tablica 70. Kielichy szklane: a-b – Głogów, 4. ćw. XVI – 1. poł. XVII w.; c-d – Głogów, 4. ćw. XVI – 1. ćw. XVII w.; e – Legnica, 2.-4. ćw. XVII w.; f – Świdnica, kon. XVI – 1. poł. XVII w.

Plate 70. Glass goblets: a-b – Głogów, 4th quarter of the 16th–1st half of the 17th c.; c-d – Głogów, 4th quarter of the 16th–1st quarter of the 17th c.; e – Legnica, 2nd–4th quarter of the 17th c.; f – Świdnica, late 16th–1st half of the 17th c.



Tablica 71. Kielichy szklane: a-b – Jelenia Góra, 4. ćw. XVI – 1. ćw. XVII w.; c – Wrocław, 4. ćw. XVI – 1. ćw. XVII w.; d-e – Głogów, 4. ćw. XVI – 1. ćw. XVII w.

Plate 71. Glass goblets: a-b – Jelenia Góra, 4th quarter of the 16th–1st quarter of the 17th c.; c – Wrocław, 4th quarter of the 16th–1st quarter of the 17th c.; d-e – Głogów, 4th quarter of the 16th–1st quarter of the 17th c.



Tablica 72. Kubki ceramiczne: a – Brzeg, 2. poł. XVI – 1. ćw. XVII w.; b – Głogów, 2. poł. XVI – 1. ćw. XVII w.; c – Głogów, 4. ćw. XVI – 1. ćw. XVII w.; d – Nysa, 4. ćw. XVI – 1. ćw. XVII w.; e – Bytom, XVI w.; f – Nysa, XVI w.

Plate 72. Ceramic mugs: a – Brzeg, 2nd half of the 16th–1st quarter of the 17th c.; b – Głogów, 2nd half of the 16th–1st quarter of the 17th c.; c – Głogów, 4th quarter of the 16th–1st quarter of the 17th c.; d – Nysa, 4th quarter of the 16th–1st quarter of the 17th c.; e – Bytom, 16th c.; f – Nysa, 16th c.



Tablica 73. Kubki ceramiczne: a-b - Brzeg, 4. ćw. XVI - 1. poł. XVII w.; c - Nysa, 4. ćw. XVI - 1. ćw. XVII w.; d-f - Nysa, 4. ćw. XVI - 1. poł. XVII w.

Plate 73. Ceramic mugs: a-b - Brzeg, 4th quarter of the 16th-1st half of the 17th c.; c - Nysa, 4th quarter of the 16th-1st quarter of the 17th c.; d-f - Nysa, 4th quarter of the 16th-1st half of the 17th c.



Tablica 74. Kufle ceramiczne: a-e – Głogów, XV w.; f – Nysa, XVI w.

Plate 74. Ceramic tankards: a-e – Głogów, 15th c.; f – Nysa, 16th c.



Tablica 75. Kufel ceramiczny, Głogów: 2. poł. XVI – pocz. XVII w.

Plate 75. A ceramic tankard, Głogów: 2nd half of the 16th-early 17th c.



Tablica 76. Kufel ceramiczny, Świdnica: ok. 1562 r.

Plate 76. A ceramic tankard, Świdnica: ca. 1562



Tablica 77. Kufle ceramiczne: a - Brzeg, 2. poł. XVI - 1. ćw. XVII w.; b-d - Głogów, 2. poł. XVI - 1. ćw. XVII w.

Plate 77. Ceramic tankards: a - Brzeg, 2nd half of the 16th-1st quarter of the 17th c.; b-d - Głogów, 2nd half of the 16th-1st quarter of the 17th c.



Tablica 78. Puchary ceramiczne: a – Legnica, 2. poł. XII – 1. poł. XIII w.; b-c – Wrocław, 2. poł. XII – pocz. XIII w.; d – Wrocław, 1. poł. XIII w.

Plate 78. Ceramic beakers: a – Legnica, 2nd half of the 12th–1st half of the 13th c.; b-c – Wrocław, 2nd half of the 12th–early 13th c.; d – Wrocław, 1st half of the 13th c.



Tablica 79. Ceramiczne kielichy (d) i puchary (a-c, e-f): a – Brzeg, 2. poł. XIII w.; b – Wrocław, XIII w.; c-d – Wrocław, 1. poł. XIII w.; e-f – Legnica, XV w.

Plate 79. Ceramic goblets (d) and beakers (a-c, e-f): a – Brzeg, 2nd half of the 13th c.; b – Wrocław, 13th c.; c-d – Wrocław, 1st half of the 13th c.; e-f – Legnica, 15th c.



Tablica 80. Puchary ceramiczne: a – Nysa, XIV w.; b-c – Brzeg, 2. ćw. XIV – 1. ćw. XV w.; d – Jawor, XV w.; e – Świdnica, kon. XIV – XV w.; f – Sobótka, 2. poł. XIV – 1. poł. XV w.

Plate 80. Ceramic beakers: a – Nysa, 14th c.; b-c – Brzeg, 2nd quarter of the 14th–1st quarter of the 15th c.; d – Jawor, 15th c.; e – Świdnica, late 14th–15th c.; f – Sobótka, 2nd half of the 14th–1st half of the 15th c.



Tablica 81. Puchary ceramiczne: a – Bytom, kon. XIII – 1. poł. XIV w.; b – Opole, XIV w.; c – Legnica, 2. poł. XIV – 1. poł. XV w.; d-f – Nysa, XV w.

Plate 81. Ceramic beakers: a – Bytom, late 13th–1st half of the 14th c.; b – Opole, 14th c.; c – Legnica, 2nd half of the 14th–1st half of the 15th c.; d-f – Nysa, 15th c.



Tablica 82. Puchary ceramiczne: a – Brzeg, 4. ćw. XIII – 1. poł. XIV w.; b – Bytom, 2. poł. XIII – 1. poł. XIV w.; c – Racibórz, XV w.; d – Legnica, 2. poł. XIV – 1. poł. XV w.; e – Legnica, 4. ćw. XIII – 1. poł. XIV w.; f – Nysa, 2. poł. XIV – 1. poł. XV w.

Plate 82. Ceramic beakers: a – Brzeg, 4th quarter of the 13th–1st half of the 14th c.; b – Bytom, 2nd half of the 13th–1st half of the 14th c.; c – Racibórz, 15th c.; d – Legnica, 2nd half of the 14th–1st half of the 15th c.; e – Legnica, 4th quarter of the 13th–1st half of the 14th c.; f – Nysa, 2nd half of the 14th–1st half of the 15th c.



Tablica 83. Puchar ceramiczny, Głogów: XIV w. (wys. 18,3 cm)

Plate 83. A ceramic beaker, Głogów: 14th c. (18,3 cm tall)



Tablica 84. Ceramiczny kubek (d) i puchary (a-c), Głogów: a – 4. ćw. XIII – 1. poł. XIV w.; b – XIV w.; c – kon. XIII – 3 ćw. XIV w.; d – XV w.

Plate 84. A ceramic mug (d) and beakers (a-c), Głogów: a – 4th quarter of the 13th–1st half of the 14th c.; b – 14th c.; c – late 13th–3rd quarter of the 14th c.; d – 15th c.



Tablica 85. Puchary ceramiczne: a - Wschowa, XIV w.; b-c - Wrocław, 4. ćw. XIII - 1. ćw. XIV w.; d - Wodzisław Śląski, 2.-3. ćw. XIV w.

Plate 85. Ceramic beakers: a - Wschowa, 14th c.; b-c - Wrocław, 4th quarter of the 13th-1st quarter of the 14th c.; d - Wodzisław Śląski, 2nd-3rd quarter of the 14th c.



Tablica 86. Puchary ceramiczne, Wrocław: a – XIV w.; b – 4. ćw. XIII – 1. poł. XIV w.; c-d – 4. ćw. XIII – 1. ćw. XIV w.

Plate 86. Ceramic beakers, Wrocław: a – 14th c.; b – 4th quarter of the 13th–1st half of the 14th c.; c-d – 4th quarter of the 13th–1st quarter of the 14th c.



Tablica 87. Puchary ceramiczne: a – Nysa, XIV w.; b – Głogów, XV w.; c – Nysa, XV w.; d – Opole, XV w.

Plate 87. Ceramic beakers: a – Nysa, 14th c.; b – Głogów, 15th c.; c – Nysa, 15th c.; d – Opole, 15th c.



Tablica 88. Puchary ceramiczne: a-c - Legnica, 2. poł. XV - 1. poł. XVI w.; d - Racibórz, 2. poł. XV - 1. poł. XVI w.; e - Wrocław, XV w.; f-g - Nysa, 4. ćw. XIV - 1. ćw. XV w.

Plate 88. Ceramic beakers: a-c - Legnica, 2nd half of the 15th-1st half of the 16th c.; d - Racibórz, 2nd half of the 15th-1st half of the 16th c.; e - Wrocław, 15th c.; f-g - Nysa, 4th quarter of the 14th-1st quarter of the 15th c.



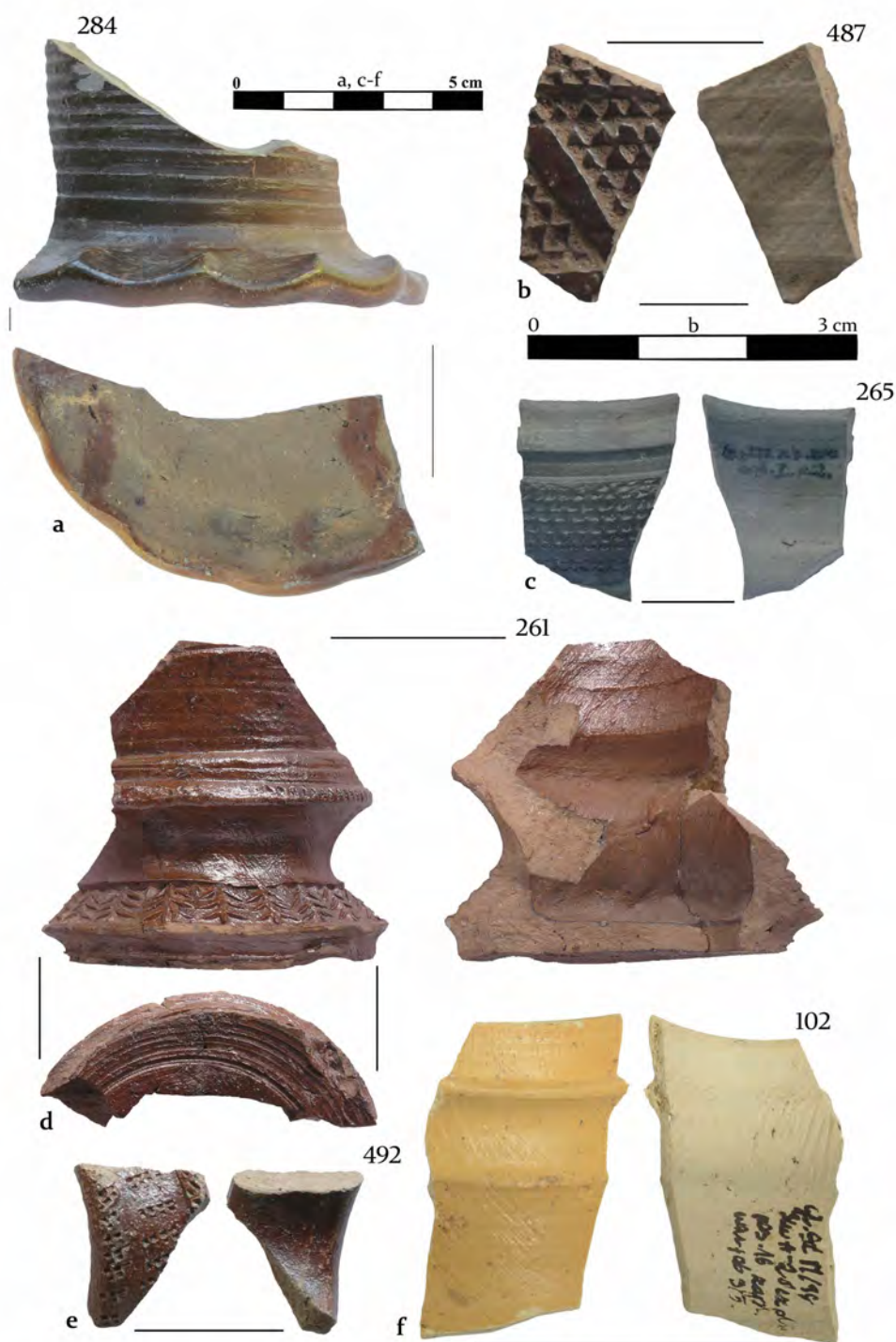
Tablica 89. Puchary ceramiczne: a – Nysa, XV – pocz. XVI w.; b – Wrocław, XV – pocz. XVI w.; c-d – Wrocław, XV w.

Plate 89. Ceramic beakers: a – Nysa, 15th-early 16th c.; b – Wrocław, 15th-early 16th c.; c-d – Wrocław, 15th c.



Tablica 90. Ceramiczny dzbanek (d), puchary (a-b, e) i naczynie o formie nieokreślonej (c): a – Głogów, XV – 1. poł. XVI w.; b – Głogów, 2. poł. XV – pocz. XVI w.; c – Głogów, XV – pocz. XVI w.; d – Nysa, XV w.; e – Wrocław, XV – pocz. XVI w.

Plate 90. A ceramic jug (d), beakers (a-b, e) and a vessel of an unidentified form (c): a – Głogów, 15th–1st half of the 16th c.; b – Głogów, 2nd half of the 15th–early 16th c.; c – Głogów, 15th–early 16th c.; d – Nysa, 15th c.; e – Wrocław, 15th–early 16th c.



Tablica 91. Ceramiczny dzban (f), kubek (c), puchar (a) i naczynia o formie nieokreślonej (b, e), Głogów: a – 2. poł. XV – 1. poł. XVI w.; b – XV w.; c – 4. ćw. XV – 1. ćw. XVI w.; e – 2. poł. XV – 1. ćw. XVI w.; f – XVI w.

Plate 91. Ceramic vessels: a jug (f), a mug (c), a beaker (a) and vessels of an unidentified form (b, e), Głogów: a – 2nd half of the 15th–1st half of the 16th c.; b – 15th c.; c – 4th quarter of the 15th–1st quarter of the 16th c.; e – 2nd half of the 15th–1st quarter of the 16th c.; f – 16th c.



Tablica 92. Puchary ceramiczne: a-c – Legnica, kon. XIV – XV w.; d – Legnica, XV w.; e-f – Wrocław, XV w.

Plate 92. Ceramic beakers: a-c – Legnica, late 14th–15th c.; d – Legnica, 15th c.; e-f – Wrocław, 15th c.



Tablica 93. Puchary ceramiczne (a-e) i detale zdobnicze (f): a – Legnica, kon. XV – 1. poł. XVI w.; b-c – Opole, 2. poł. XIV – 1. poł. XV w.; d-f – Opole, XV w.

Plate 93. Ceramic beakers (a-e) and decoration details (f): a – Legnica, late 15th–1st half of the 16th c.; b-c – Opole, 2nd half of the 14th–1st half of the 15th c.; d-f – Opole, 15th c.



Tablica 94. Puchary ceramiczne: a, c-d - Nysa, XV w.; b - Polkowice, XVI w.; e - Głogów, XVI w.; f - Wrocław, XVI w.; g - Głogów, kon. XV - XVI w.

Plate 94. Ceramic beakers: a, c-d - Nysa, 15th c.; b - Polkowice, 16th c.; e - Głogów, 16th c.; f - Wrocław, 16th c.; g - Głogów, late 15th-16th c.



Tablica 95. Ceramiczny kielich (c), kufle (a-b) i puchary (d-f): a-b – Głogów, XVI w.; c – Głogów, kon. XV – 1. poł. XVI w.; d-e – Opole, XV w.; f – Nysa, 4. ćw. XV – 1. poł. XVI w.

Plate 95. Ceramic vessels: a goblet (c), tankards (a-b) and beakers (d-f): a-b – Głogów, 16th c.; c – Głogów, late 15th–1st half of the 16th c.; d-e – Opole, 15th c.; f – Nysa, 4th quarter of the 15th–1st half of the 16th c.



Tablica 96. Drewniane kielichy (a-e), kufel (g) i puchar (f): a – Wrocław, kon. XII – 1. poł. XIII w.; b – Wrocław, 4. ćw. XII – 1. ćw. XIII w.; c-d – Wrocław, 1. poł. XIII w.; e – Wrocław, XIII w.; f – Wrocław, 1. poł. XIV w.; g – Nysa, 2. poł. XVI – XVII w.

Plate 96. Wooden: goblets (a-e), a tankard (g) and a beaker (f): a – Wrocław, late 12th–1st half of the 13th c.; b – Wrocław, 4th quarter of the 12th–1st quarter of the 13th c.; c-d – Wrocław, 1st half of the 13th c.; e – Wrocław, 13th c.; f – Wrocław, 1st half of the 14th c.; g – Nysa, 2nd half of the 16th–17th c.



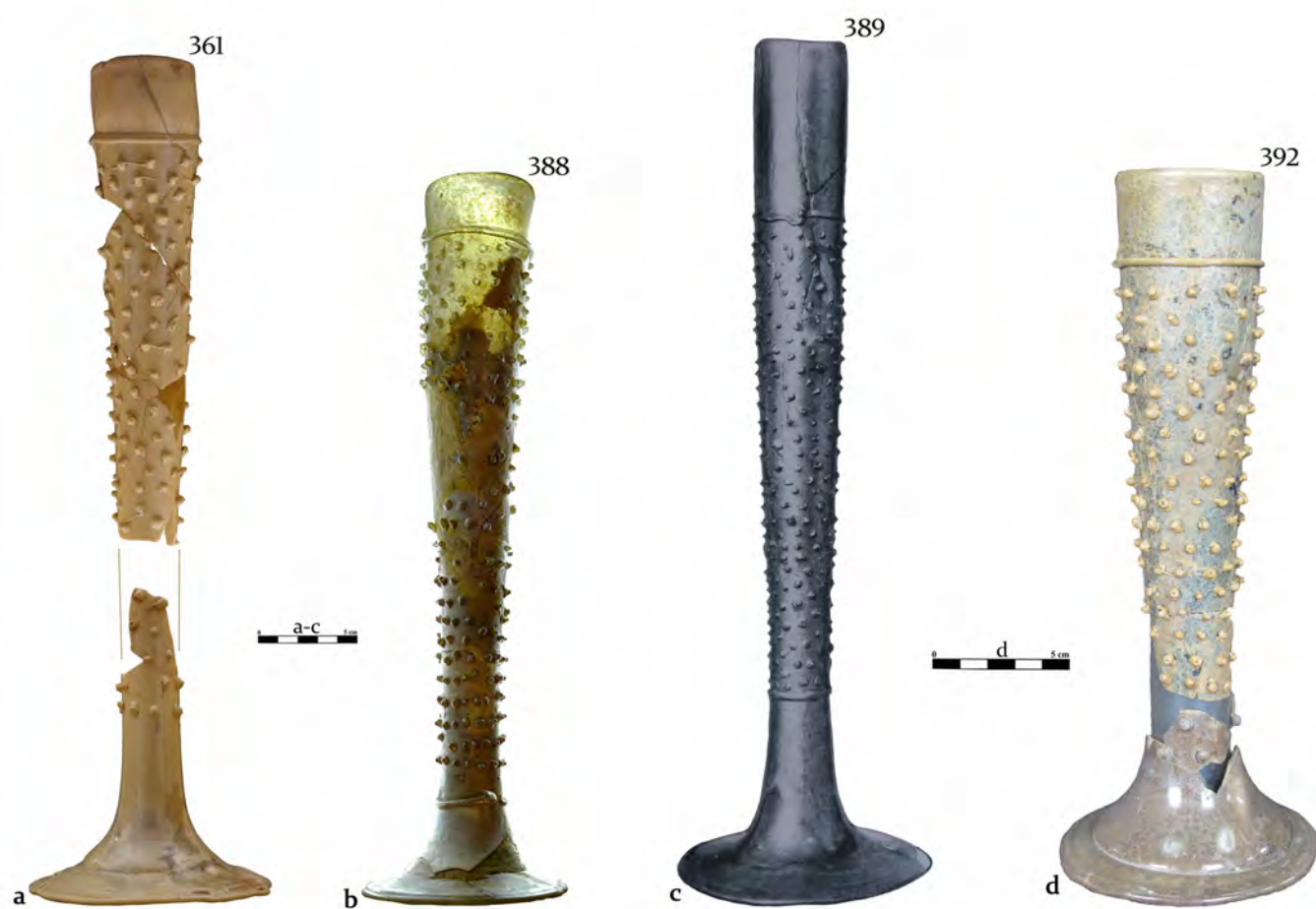
Tablica 97. Szklance: a-g - Dzierżonów, kon. XIV - XV w.; h - Jelenia Góra, XIV - XV w.; i - Jawor, 2. poł. XIV - XV w.

Plate 97. Glass beakers: a-g - Dzierżonów, late 14th-15th c.; h - Jelenia Góra, 14th-15th c.; i - Jawor, 2nd half of the 14th-15th c.



Tablica 98. Szklanica, Głogów: 2. poł. XIV – XV w. (wys. ok. 43 cm)

Plate 98. A glass beaker, Głogów: 2nd half of the 14th–15th c. (ca. 43 cm tall)



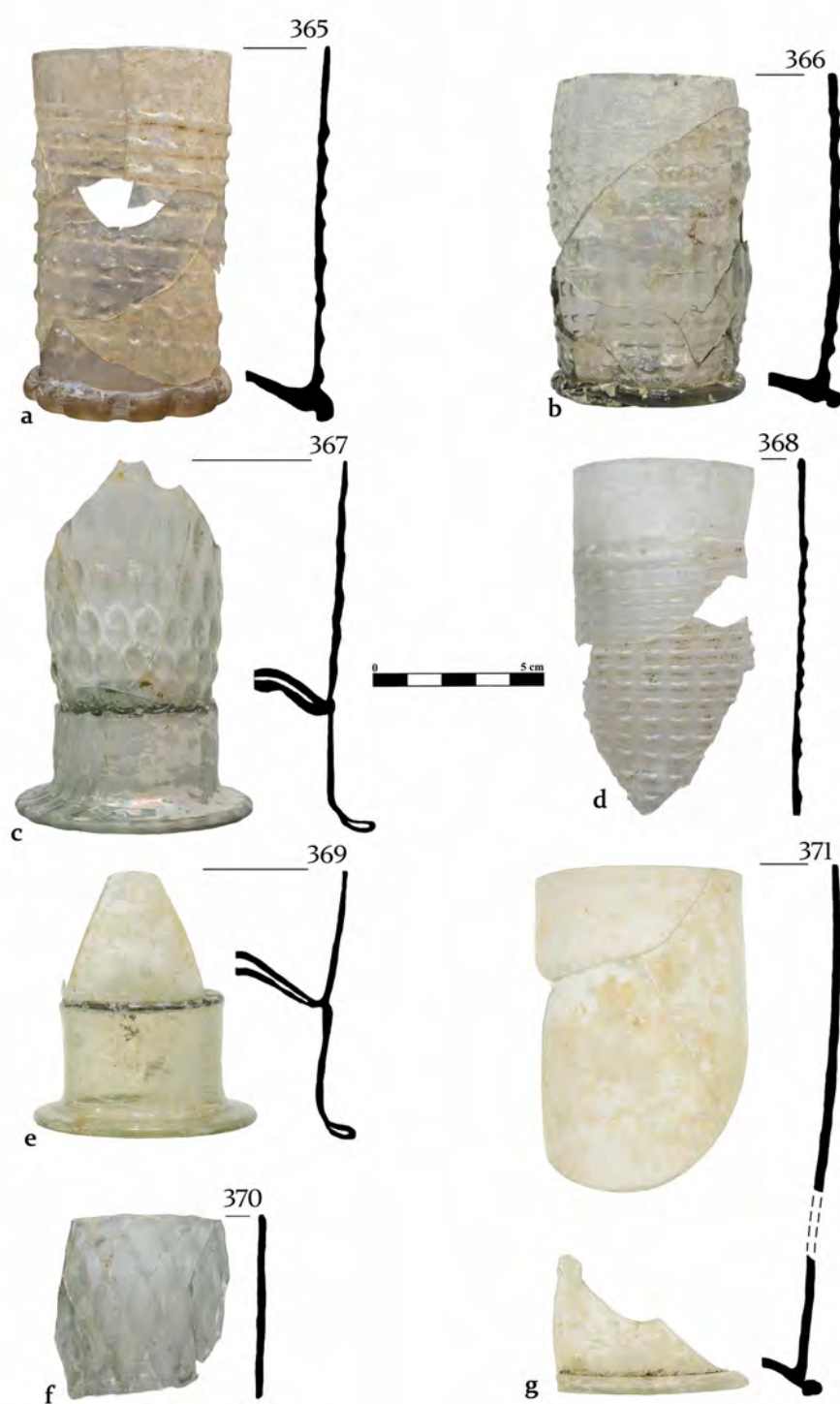
Tablica 99. Szklanice: a – Głogów, 2. poł. XIV – XV w.; b-c – Legnica, 2. poł. XIV – XV w.; d – Nysa, 4. ćw. XIV – XV w.

Plate 99. Glass beakers: a – Głogów, 2nd half of the 14th–15th c.; b-c – Legnica, 2nd half of the 14th–15th c.; d – Nysa, 4th quarter of the 14th–15th c.



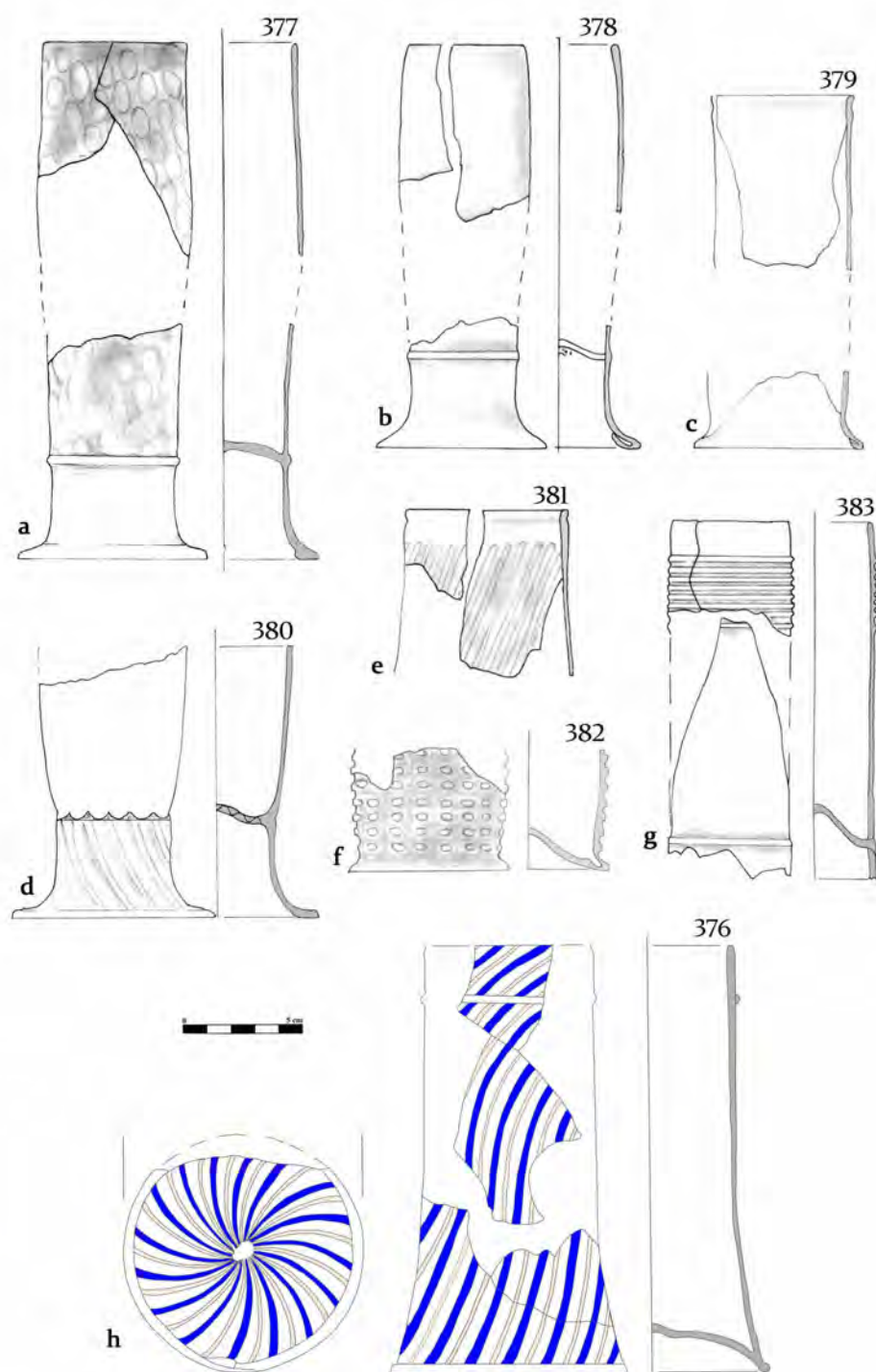
Tablica 100. Szklance: a – Wrocław, XV – 1. ćw. XVI w.; b-c – Głogów, 2. poł. XIII – 1. ćw. XIV w.; d – Wrocław, 2. poł. XIII – 1. poł. XIV w.; e – Nysa, XIV – XV w. f – Nysa, 4. ćw. XIV – XV w.

Plate 100. Glass beakers: a – Wrocław, 15th–1st quarter of the 16th c.; b-c – Głogów, 2nd half of the 13th–1st quarter of the 14th c.; d – Wrocław, 2nd half of the 13th–1st half of the 14th c.; e – Nysa, 14th–15th c.; f – Nysa, 4th quarter of the 14th–15th c.



Tablica 101. Szklanice, Głogów: 4. ćw. XVI – 1. ćw. XVII w.

Plate 101. Glass beakers, Głogów: 4th quarter of the 16th–1st quarter of the 17th c.



Tablica 102. Szklance, Głogów: 4. ćw. XVI – 1. poł. XVII w.

Plate 102. Glass beakers, Głogów: 4th quarter of the 16th–1st half of the 17th c.



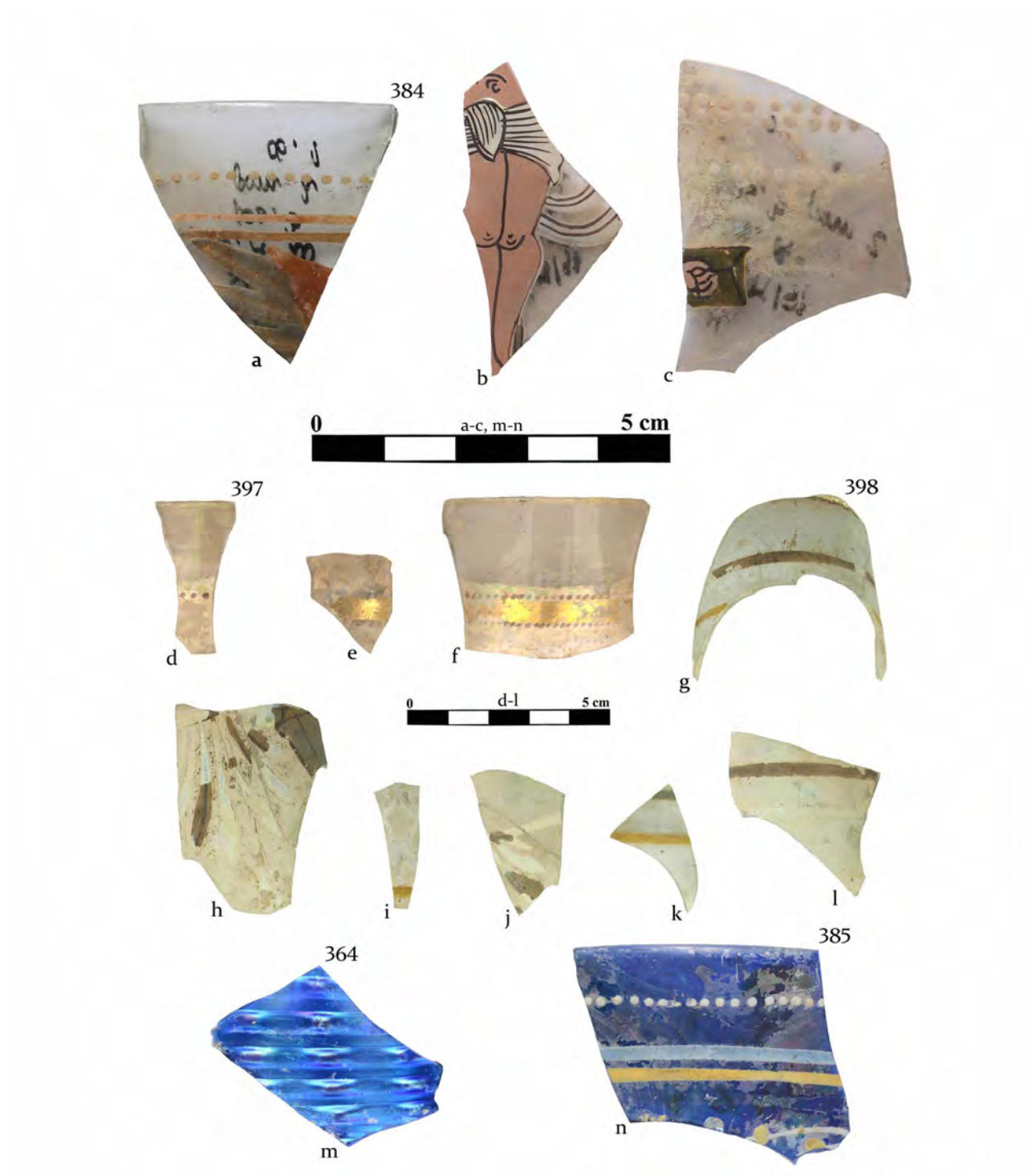
Tablica 103. Szklanice, Głogów: 4. ćw. XVI – 1. ćw. XVII w.

Plate 103. Glass beakers, Głogów: 4th quarter of the 16th–1st quarter of the 17th c.



Tablica 104. Szklanica, Wrocław: 4. ćw. XVI – 1. ćw. XVII w.

Plate 104. A glass beaker, Wrocław: 4th quarter of the 16th–1st quarter of the 17th c.



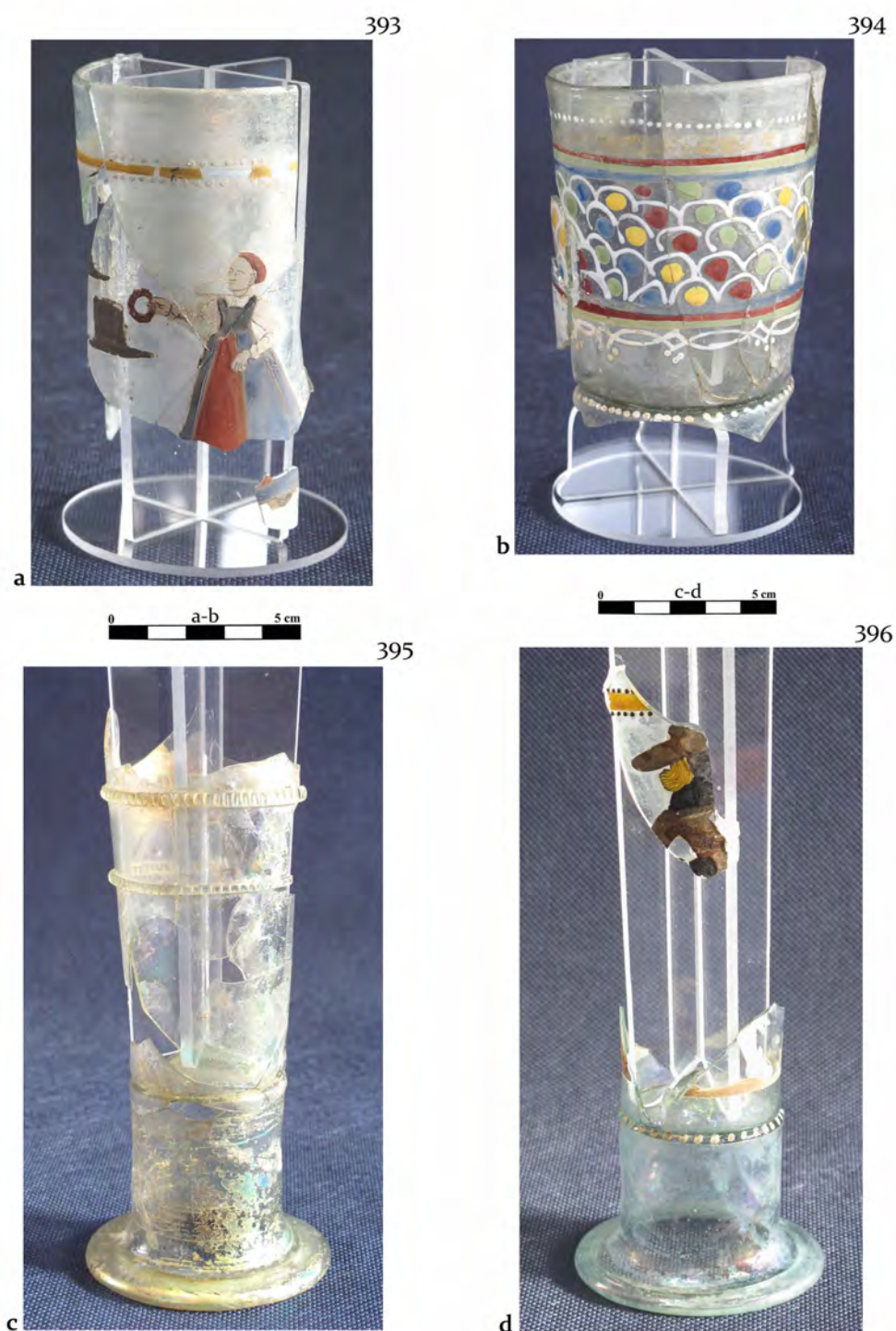
Tablica 105. Szklance: a-c, n – Głogów, 4. ćw. XVI – 1. poł. XVII w.; d-l – Nysa, 4. ćw. XVI – 1. poł. XVII w.; m – Głogów, 4. ćw. XVI – 1. ćw. XVII w.

Plate 105. Glass beakers: a-c, n – Głogów, 4th quarter of the 16th–1st half of the 17th c.; d-l – Nysa, 4th quarter of the 16th–1st half of the 17th c.; m – Głogów, 4th quarter of the 16th–1st quarter of the 17th c.



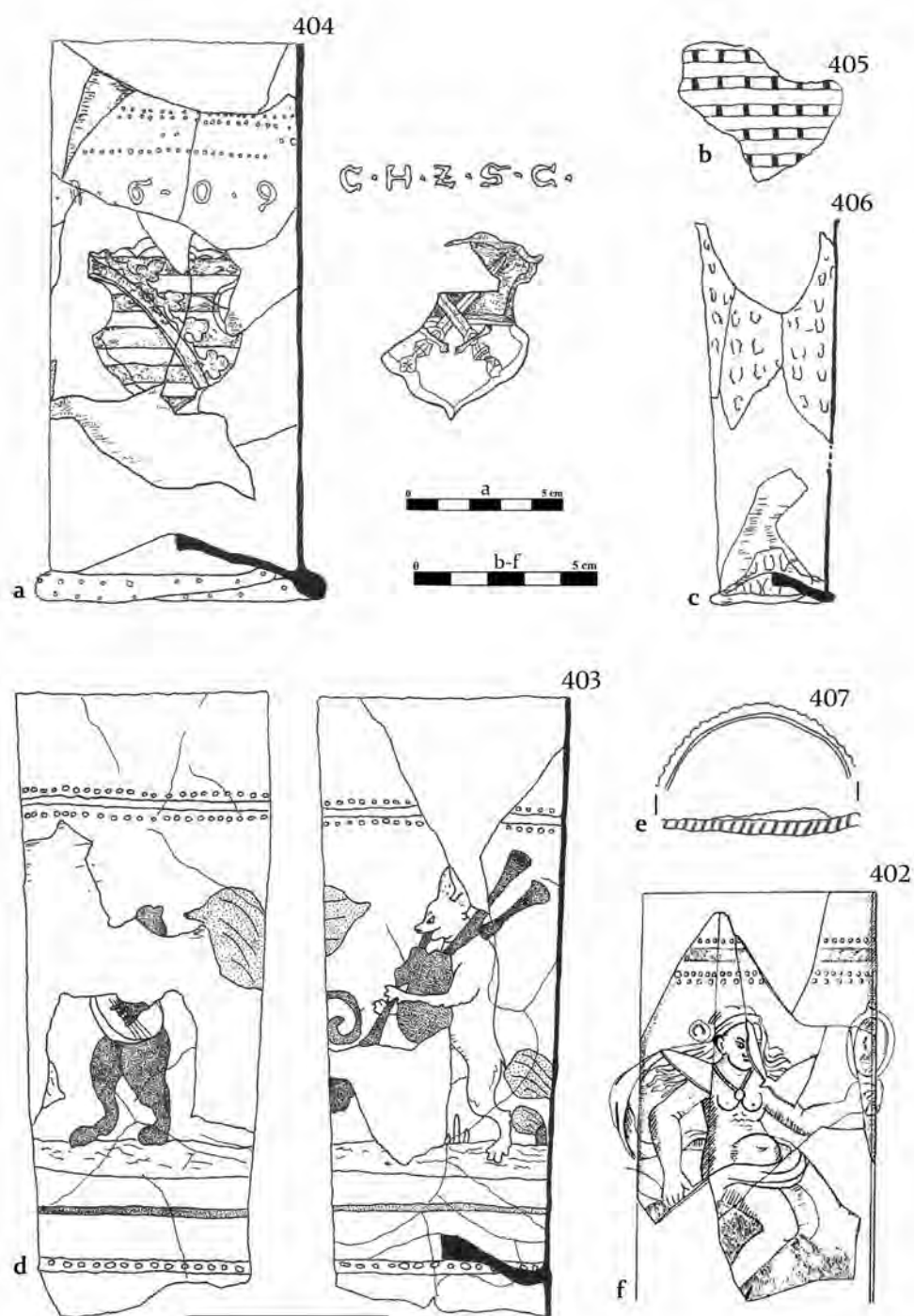
Tablica 106. Szklanice, Głogów: 4. ćw. XVI – 1. ćw. XVII w.

Plate 106. Glass beakers, Głogów: 4th quarter of the 16th–1st quarter of the 17th c.



Tablica 107. Szklance, Nysa: 4. ćw. XVI – 1. poł. XVII w.

Plate 107. Glass beakers, Nysa: 4th quarter of the 16th–1st half of the 17th c.



Tablica 108. Szklance: a – Żagań, ok. 1608 r.; b-e – Żagań, kon. XVI – 1. poł. XVII w.; f – Wrocław, 4. ćw. XVI – 1. poł. XVII w.

Plate 108. Glass beakers: a – Żagań, ca. 1608; b-e – Żagań, late 16th– 1st half of the 17th c.; f – Wrocław, 4th quarter of the 16th–1st half of the 17th c.



Tablica 109. Misy ceramiczne: a-b – Głogów, XIV w.; c – Bytom, XVI w.; d – Bytom, XV w.; e – Świdnica, XV w.; f – Brzeg, XVI w.

Plate 109. Ceramic bowls: a-b – Głogów, 14th c.; c – Bytom, 16th c.; d – Bytom, 15th c.; e – Świdnica, 15th c.; f – Brzeg, 16th c.



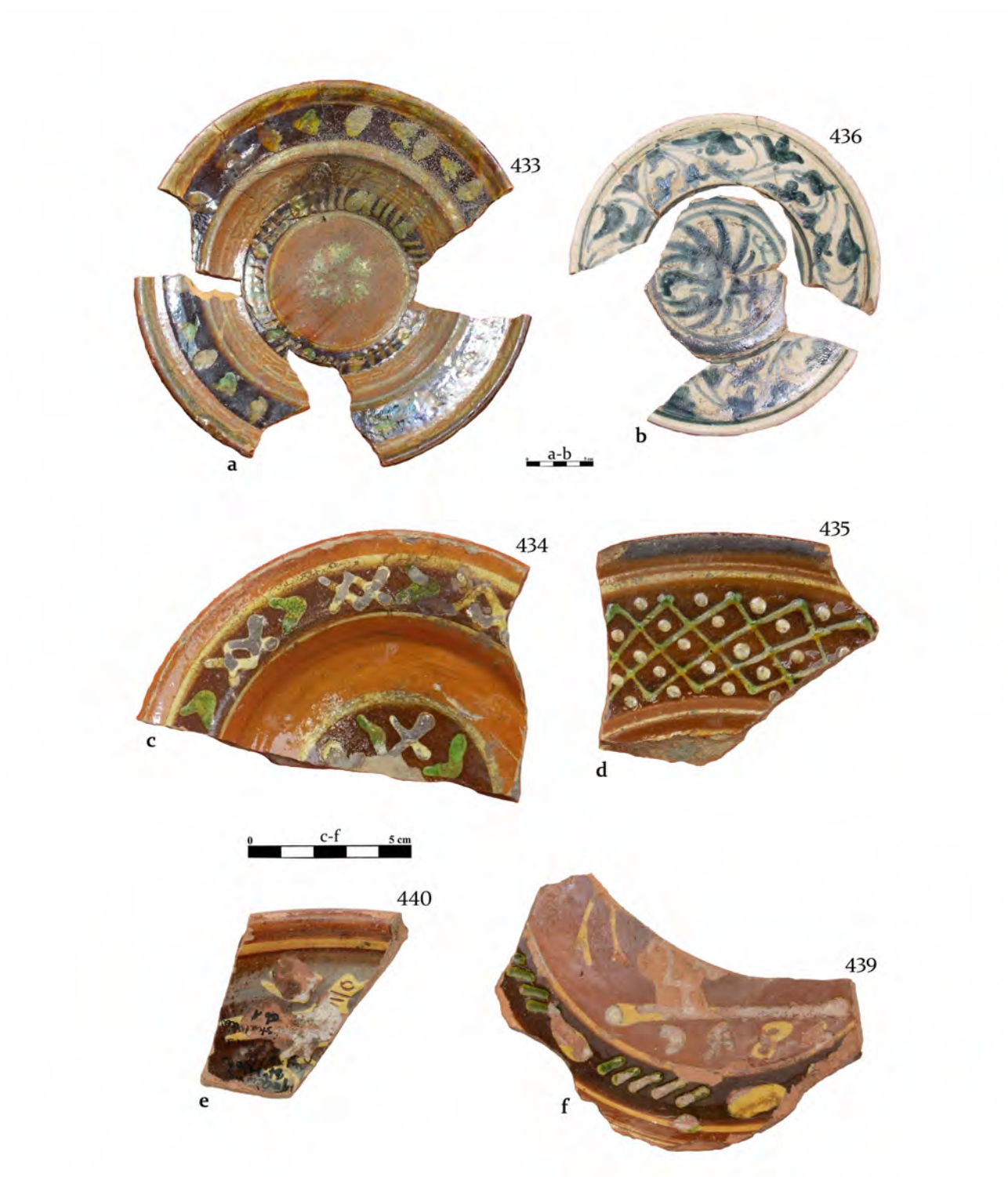
Tablica 110. Misy drewniane: a – Legnica, kon. XIII – 1. poł. XIV w.; b – Głogów, 4. ćw. XIII – 1. poł. XIV w.; c – Nysa, kon. XIII – 1. poł. XIV w.; d-e – Wrocław, 2. poł. XII – pocz. XIII w.; f – Wrocław, 1. poł. XIII w.

Plate 110. Wooden bowls: a – Legnica, late 13th–1st half of the 14th c.; b – Głogów, 4th quarter of the 13th–1st half of the 14th c.; c – Nysa, late 13th–1st half of the 14th c.; d-e – Wrocław, 2nd half of the 12th–early 13th c.; f – Wrocław, 1st half of the 13th c.



Tablica 111. Misy drewniane: a – Głogów, XIV–XV w.; b – Legnica, kon. XIII – XIV w.; c – Wrocław, 1. poł. XIII w.; d – Nysa, XIV w.

Plate 111. Wooden bowls: a – Głogów, 14th–15th c.; b – Legnica, late 13th–14th c.; c – Wrocław, 1st half of the 13th c.; d – Nysa, 14th c.



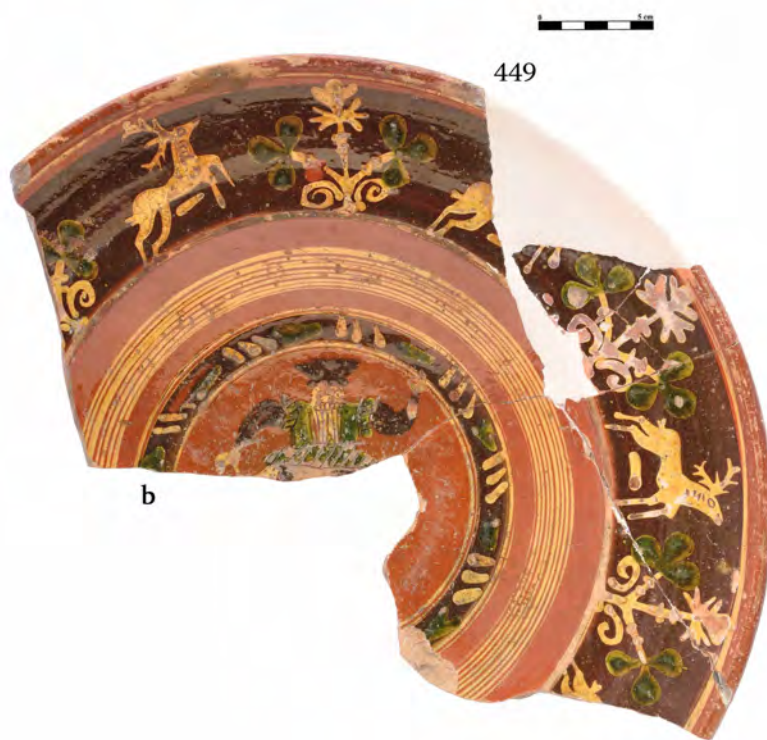
Tablica 112. Talerze ceramiczne: a, c-d - Brzeg, 4. ćw. XVI - 1. poł. XVII w.; b - Brzeg, XVII w.; e - Głogów, 4. ćw. XVI - 1 ćw. XVII w.; f - Głogów, 4. ćw. XVI w.

Plate 112. Ceramic plates: a, c-d - Brzeg, 4th quarter of the 16th-1st half of the 17th c.; b - Brzeg, 17th c.; e - Głogów, 4th quarter of the 16th-1st half 17th c.; f - Głogów, 4th quarter of the 16th c.



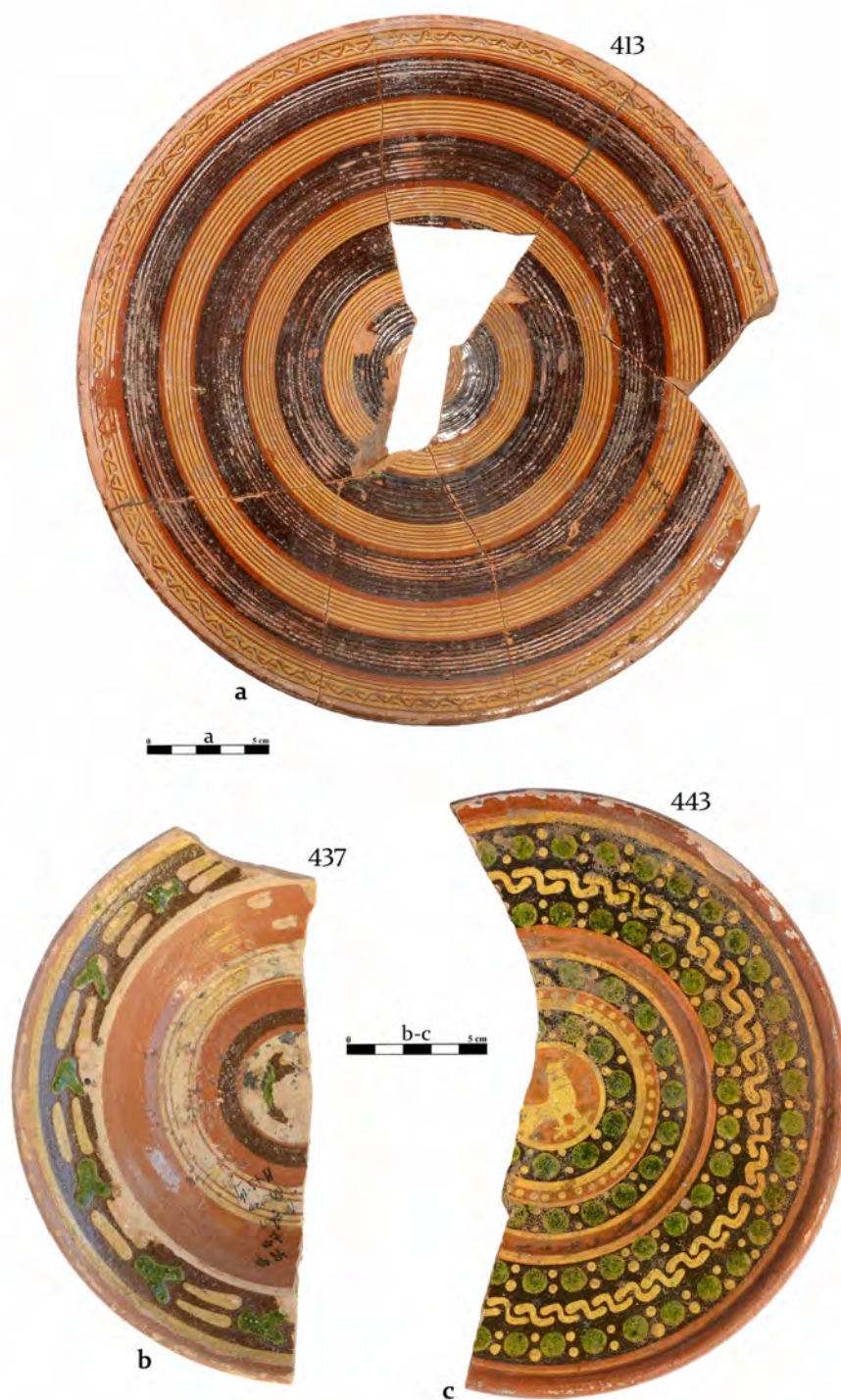
Tablica 113. Talerze ceramiczne, Głogów: 4. ćw. XVI – 1. ćw. XVII w.

Plate 113. Ceramic plates, Głogów: 4th quarter of the 16th–1st quarter of the 17th c.



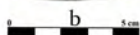
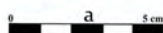
Tablica 114. Talerze ceramiczne, Głogów: 4. ćw. XVI – 1. ćw. XVII w.

Plate 114. Ceramic plates, Głogów: 4th quarter of the 16th–1st quarter of the 17th c.



Tablica 115. Ceramiczna misa (a) i talerze (b-c), Głogów: a, c – 4. ćw. XVI – 1. ćw. XVII w.; b – 2. poł. XVI – pocz. XVII w.

Plate 115. Ceramic vessels: a bowl (a) and plates (b-c), Głogów: a, c – 4th quarter of the 16th–1st quarter of the 17th c.; b – 2nd half of the 16th–early 17th c.



Tablica 116. Talerze ceramiczne, Głogów: a – 4. ćw. XVI – 1. poł. XVII w.; b – XVII w.

Plate 116. Ceramic plates, Głogów: a – 4th quarter of the 16th–1st half of the 17th c.; b – 17th c.



Tablica 117. Talerze ceramiczne: a-b – Legnica, 4 ćw. XVI – 1. poł. XVII w.; c – Nysa, 4. ćw. XVI – 1. poł. XVII w.

Plate 117. Ceramic plates: a-b – Legnica, 4th quarter of the 16th–1st half of the 17th c.; c – Nysa, 4th quarter of the 16th–1st half of the 17th c.



Tablica 118. Talerze ceramiczne: a-d – Nysa, 4. ćw. XVI – 1. poł. XVII w.; e-g – Nysa, kon. XVI – 3. ćw. XVII w.; h – Jelenia Góra, 4. ćw. XVI – 1. poł. XVII w.; i – Świdnica, 4. ćw. XVI – 1. poł. XVII w.; j – Wrocław, kon. XVI – 3. ćw. XVII w.; k – Wrocław, 4. ćw. XVI – 1. poł. XVII w.

Plate 118. Ceramic plates: a-d – Nysa, 4th quarter of the 16th–1st half of the 17th c.; e-g – Nysa, late 16th–3rd quarter of the 17th c.; h – Jelenia Góra, 4th quarter of the 16th–1st half of the 17th c.; i – Świdnica, 4th quarter of the 16th–1st half of the 17th c.; j – Wrocław, late 16th–3rd quarter of the 17th c.; k – Wrocław, 4th quarter of the 16th–1st half of the 17th c.



Tablica 119. Talerze ceramiczne, Wrocław: a – ok. 1579 r.; b – 4. ćw. XVI – 1. ćw. XVII w.

Plate 119. Ceramic plates, Wrocław: a – ca. 1579; b – 4th quarter of the 16th–1st quarter of the 17th c.



Tablica 120. Talerze ceramiczne (a-c, e) i detal zdobniczy (d): a – Głogów, 2. poł. XVI – pocz. XVII w.; b – Głogów, 4. ćw. XVI – 1. ćw. XVII w.; c-e – Nysa, 2. poł. XVI – 1. poł. XVII w.

Plate 120. Ceramic plates (a-c, e) and a decoration detail (d): a – Głogów, 2nd half of the 16th–early 17th c.; b – Głogów, 4th quarter of the 16th–1st quarter of the 17th c.; c-e – Nysa, 2nd half of the 16th–1st half of the 17th c.



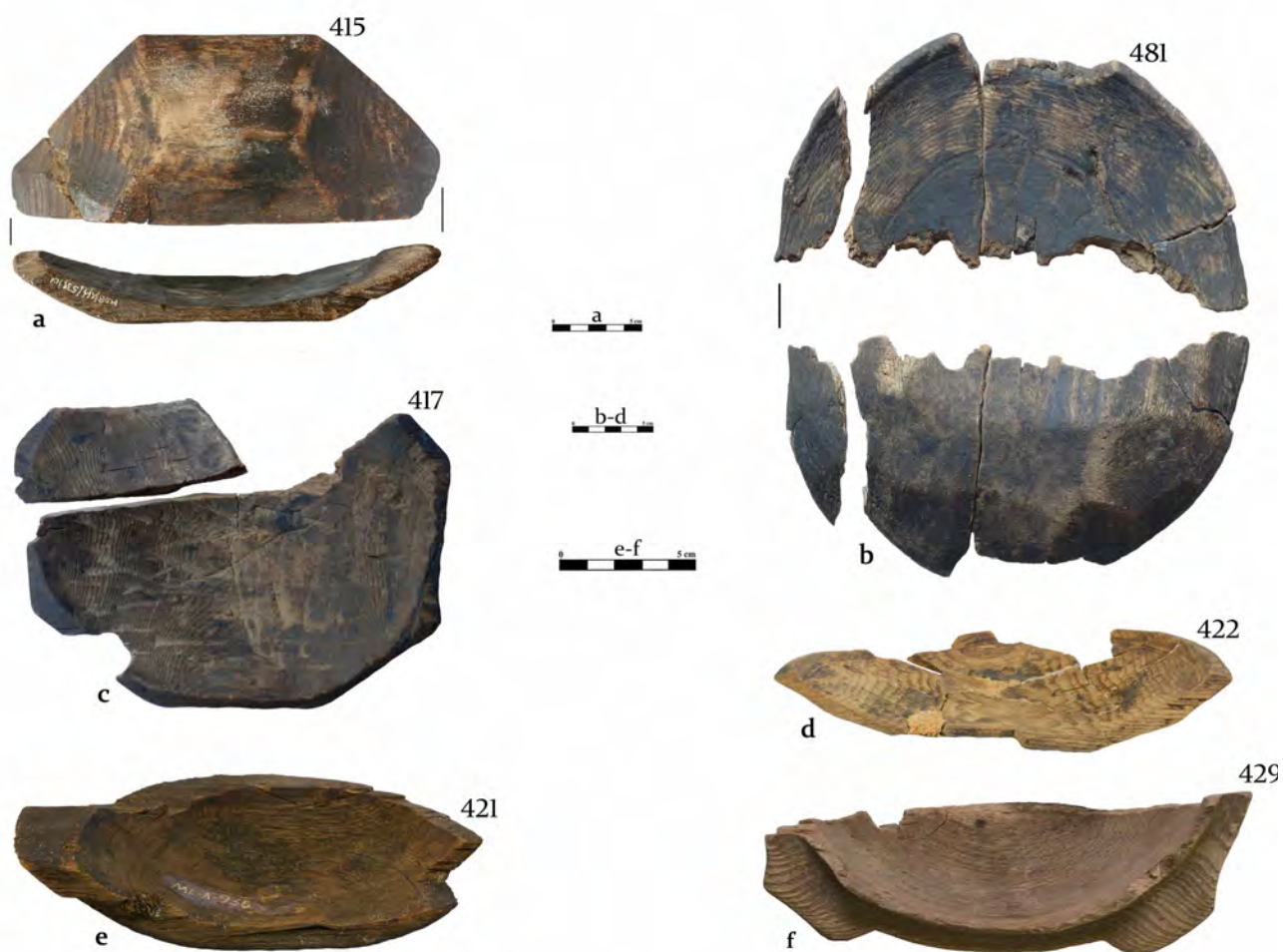
Tablica 121. Talerze ceramiczne, Głogów: XVII w.

Plate 121. Ceramic plates, Głogów: 17th c.



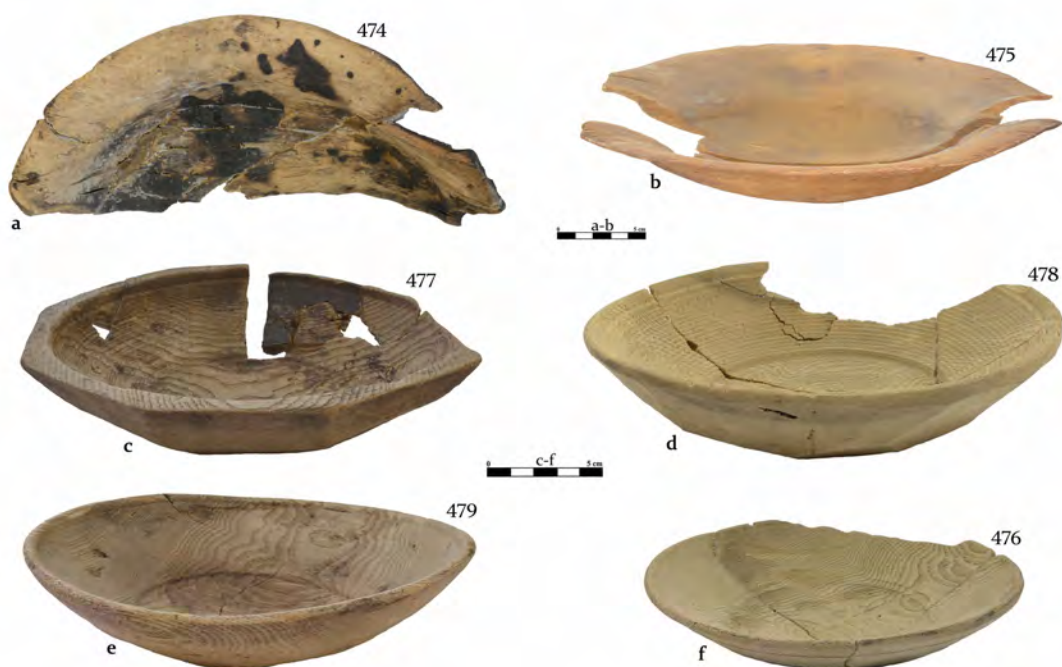
Tablica 122. Drewniane podkładki (a-c) i talerz (d): a – Nysa, 2. poł. XIV – XV w.; b – Wschowa, XIV – XV w.; c – Wrocław, 1. poł. XIII w.; d – Wrocław, 1. poł. XIV w.

Plate 122. Wooden trenchers (a-c) and plate (d): a – Nysa, 2nd half of the 14th–15th c.; b – Wschowa, 14th–15th c.; c – Wrocław, 1st half of the 13th c.; d – Wrocław, 1st half of the 14th c.



Tablica 123. Drewniane misy (a, c-f) i talerz (b): a – Bytom, XIV w.; b – Wschowa, XIV w.; c – Głogów, XIV w.; d – Legnica, kon. XIV – XV w.; e – Legnica, XIV – 1. poł. XV w.; f – Wrocław, 1. poł. XIV w.

Plate 123. Wooden bowls (a, c-f) and plate (b): a – Bytom, 14th c.; b – Wschowa, 14th c.; c – Głogów, 14th c.; d – Legnica, late 14th–15th c.; e – Legnica, 14th–1st half of the 15th c.; f – Wrocław, 1st half of the 14th c.



Tablica 124. Talerze drewniane: a – Legnica, kon. XIV – XV w.; b – Nysa, XIV – 1. poł. XV w.; c-e – Wrocław, 1. poł. XIV w.; f – Wrocław, 1. poł. XIII w.

Plate 124. Wooden plates: a – Legnica, late 14th–15th c.; b – Nysa, 14th–1st half of the 15th c.; c-e – Wrocław, 1st half of the 14th c.; f – Wrocław, 1st half of the 13th c.



Tablica 125. Talerz cynowy (a) i punca (b), Wrocław: lata ok. 1638–1678

Plate 125. Pewter: a plate (a) and a punch (b), Wrocław: ca. 1638–1678



Tablica 126. łyżki drewniane: a – Legnica, XIII – 1. poł. XV w.; b – Legnica, XIV – XV w.; c – Nysa, XV – XVI w.; d, g – Nysa, XVI – 1. poł. XVII w.; e – Nysa, XV – 1. poł. XVI w.; f – Nysa, XVI – 1. ćw. XVII w.

Plate 126. Wooden spoons: a – Legnica, 13th–1st half of the 15th c.; b – Legnica, 14th–15th c.; c – Nysa, 15th–16th c.; d, g – Nysa, 16th–1st half of the 17th c.; e – Nysa, 15th–1st half of the 16th c.; f – Nysa, 16th–1st quarter of the 17th c.



Tablica 127. Łyżki drewniane: a-c – Nysa, XIV – XV w.; d – Opole, XIV – XV w.; e-h – Wrocław, 1. poł. XIII w.; i – Wrocław, 2. poł. XIV – 1. poł. XV w.

Plate 127. Wooden spoons: a-c – Nysa, 14th–15th c.; d – Opole, 14th–15th c.; e-h – Wrocław, 1st half of the 13th c.; i – Wrocław, 2nd half of the 14th–1st half of the 15th c.



Tablica 128. łyżki drewniane: a-b – Wrocław, 1. poł. XIV w.; c-h – Wrocław, 2. poł. XIV – 1. poł. XV w.; i – Wrocław, 2. poł. XV – 1. poł. XVI w.; j-k – Wschowa, 2. poł. XIII – XV w.

Plate 128. Wooden spoons: a-b – Wrocław, 1st half of the 14th c.; c-h – Wrocław, 2nd half of the 14th–1st half of the 15th c.; i – Wrocław, 2nd half of the 15th–1st half of the 16th c.; j-k – Wschowa, 2nd half of the 13th–15th c.



Tablica 129. łyżki metalowe, Wrocław: a - XVI - 1. poł. XVII w.; b - XVI - pocz. XVII w.; c-d - 2 poł. XVI - XVII w.

Plate 129. Metal spoons, Wrocław: a - 16th-1st half of the 17th c.; b - 16th-early 17th c.; c-d - 2nd half of the 16th-17th c.



Tablica 130. łyżki metalowe, Wrocław: 2. poł. XVI – XVII w.

Plate 130. Metal spoons, Wrocław: 2nd half of the 16th–17th c.



Tablica 131. Noże żelazne: a – Bytom, XIII w.; b – Legnica, XIII – pocz. XIV w.; c – Legnica, 2. poł. XIII – 1 poł. XIV w.

Plate 131. Iron knives: a – Bytom, 13th c.; b – Legnica, 13th-early 14th c.; c – Legnica, 2nd half of the 13th-1st half of the 14th c.



Tablica 132. Noże żelazne (a-b, d) i rękojeść (c): a – Nysa, XV w.; b – Nysa, XIII w.; c – Opole, XIV – XV w.; d – Opole, 2. poł. XV – XVI w.

Plate 132. Iron: knives (a-b, d) and a handle (c): a – Nysa, 15th c.; b – Nysa, 13th c.; c – Opole, 14th–15th c.; d – Opole, 2nd half of the 15th–16th c.



Tablica 133. Noże żelazne, Wrocław: a – 2. poł. XII – pocz. XIII w.; b-c – 1. poł. XIII w.; d-e – 4. ćw. XIII – pocz. XIV w.; f-g – 1. poł. XIV w.

Plate 133. Iron knives, Wrocław: a – 2nd half of the 12th–early 13th c.; b-c – 1st half of the 13th c.; d-e – 4th quarter of the 13th–early 14th c.; f-g – 1st half of the 14th c.



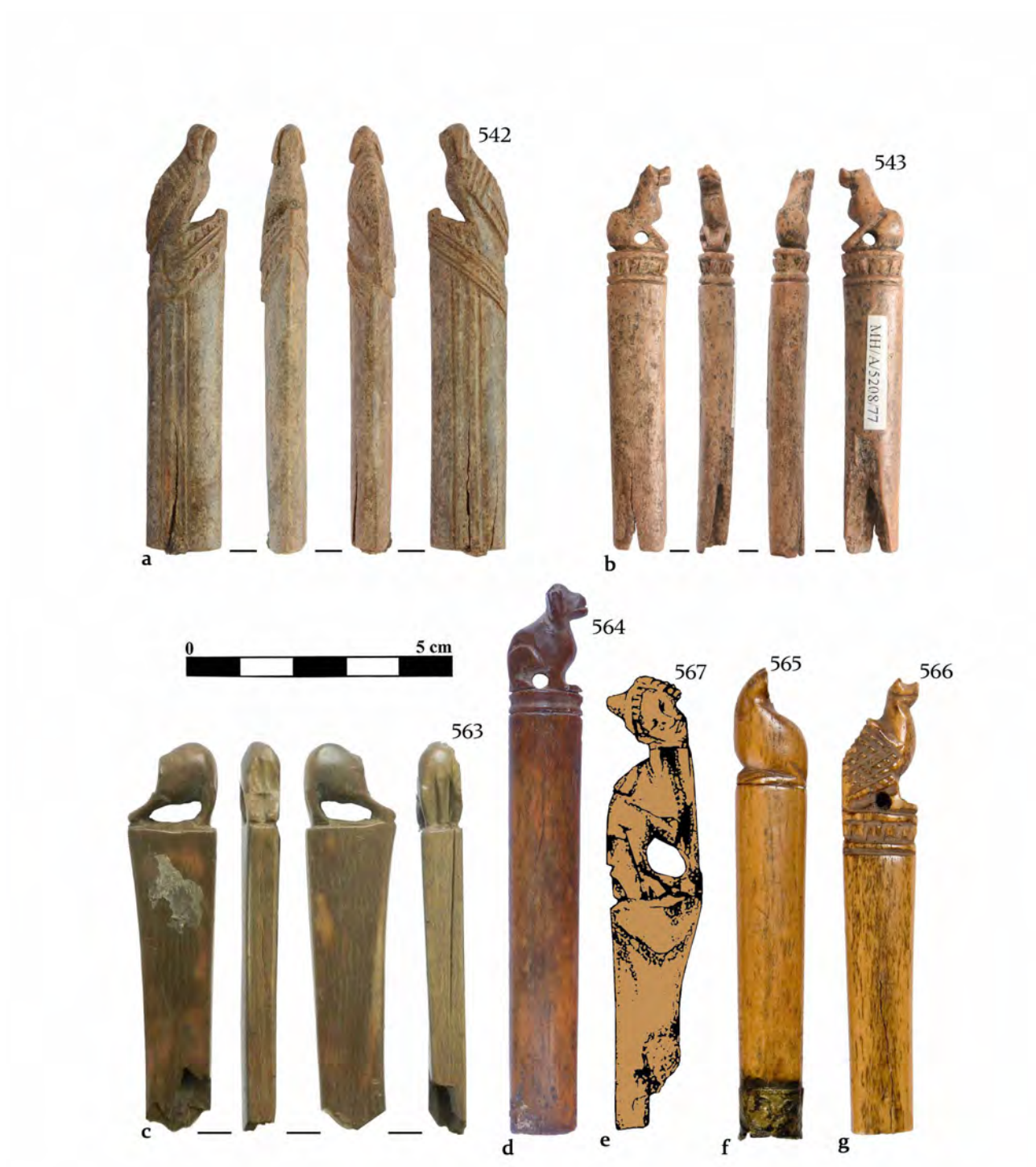
Tablica 134. Noże żelazne, Wrocław: a-b, d - 1. poł. XIII w.; c, e - 1. poł. XIV w.; f - 2. poł. XIV - 1. poł. XV w.

Plate 134. Iron knives, Wrocław: a-b, d - 1st half of the 13th c.; c, e - 1st half of the 14th c.; f - 2nd half of the 14th-1st half of the 15th c.



Tablica 135. Żelazny nóż (b) i rękojeści noży (a, c-d), Wrocław: a - 1. poł. XIII w.; b - 2. poł. XV - XVI w.; c-d - 2. poł. XIV - 1. poł. XV w.

Plate 135. Iron knife (b) and knife handles (a, c-d), Wrocław: a - 1st half of the 13th c.; b - 2nd half of the 15th-16th c.; c-d - 2nd half of the 14th-1st half of the 15th c.



Tablica 136. Kościane rękojeści noży: a – Głogów, 2. poł. XIII – 1. poł. XIV w.; b – Głogów, 1. poł. XIV w.; c-d, f-g – Wrocław, 1. poł. XIV w.; e – Wrocław, XIV w.

Plate 136. Bone knife handles: a – Głogów, 2nd half of the 13th–1st half of the 14th c.; b – Głogów, 1st half of the 14th c.; c-d, f-g – Wrocław, 1st half of the 14th c.; e – Wrocław, 14th c.



Tablica 137. Żelazne widelce (a-b, f-h) i rękojeści widelców (c-e), Wrocław: a-b, d-e - 2. poł. XVI - XVII w.; c - XVII w.; f-h - XVI - XVII w.

Plate 137. Iron forks (a-b, f-h) and fork handles (c-e), Wrocław: a-b, d-e - 2nd half of the 16th-17th c.; c - 17th c.; f-h - 16th-17th c.



Tablica 138. Żelazne noże (b, d, f-h) i widelce (a, c, e), Wrocław, XVII w.

Plate 138. Iron knives (b, d, f-h) and forks (a, c, e), Wrocław: 17th c.